

# Photometric & Chromaticity Report

Maverick Storm 4 Solo Wash: Full Spot - Full Power

## Report Summary

### Measurements

Fixture Output: 38469 lm  
Fixture Peak: 1861738 cd  
Fixture Efficacy: n/a lm/W  
Intensity @ 5m: 74470 lux  
Color Temperature: 7156 K  
CRI: 68.5      CRI R9 Value: -36.5  
CQS: 69.1  
TLCI: 46  
TM-30 Rf: 69.2  
TM-30 Rg: 94.9  
Beam Angle (50%): 7.1°  
Field Angle (10%): 12.7°  
Cutoff Angle (3%): 15.4°

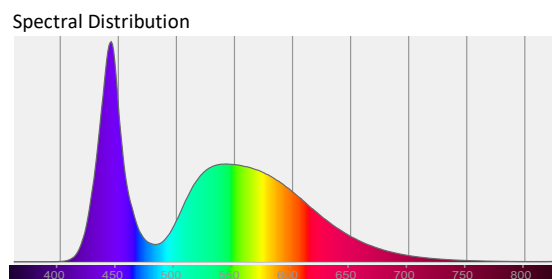
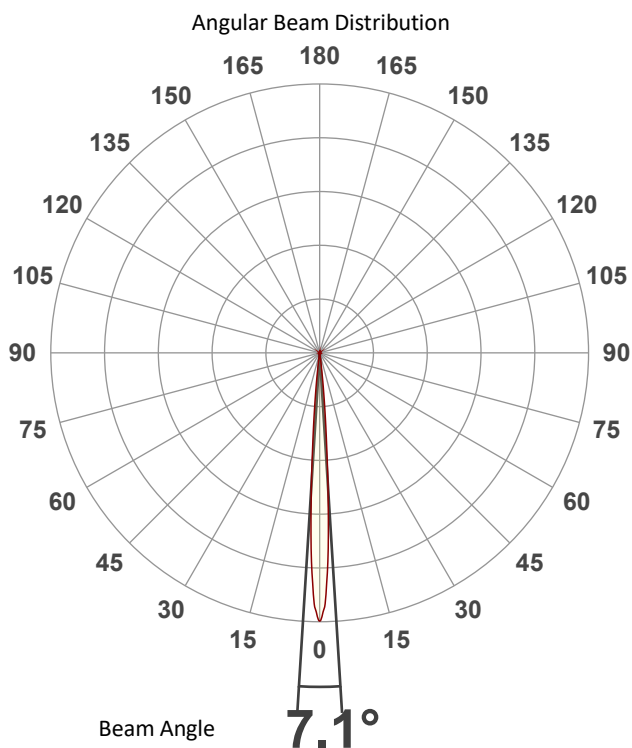
### Conditions

AC Supply: 121 V, 60 Hz  
Power: 0.0 W  
Current: 0.000 A  
Power Factor: n/a



This data sheet conforms to American National Standard E1.9 – 2007 (R2017). All data was measured and calculated by a Viso Systems LabSpion Goniometer at the Chauvet PD Optics Laboratory in Sunrise, FL on 1/29/2024 to LM-63-2002 Standards.

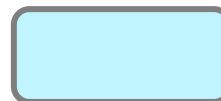
## Overall Measurement



Tested Color (CIE 1931):

X: 0.303

Y: 0.321



Light Quality

CRI: 68.5

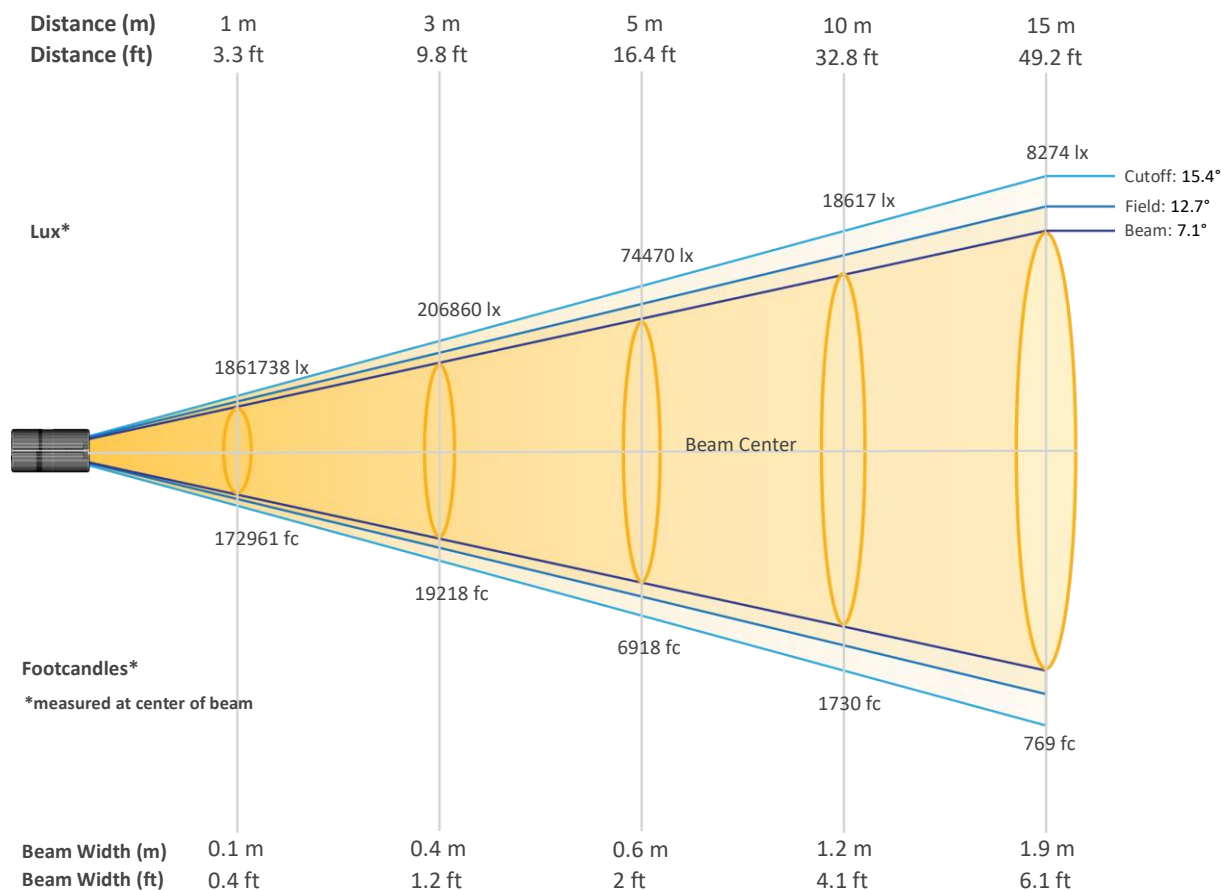
Color Temperature

7156 K

# Photometric & Chromaticity Report

Maverick Storm 4 Solo Wash: Full Spot - Full Power

## Beam Details

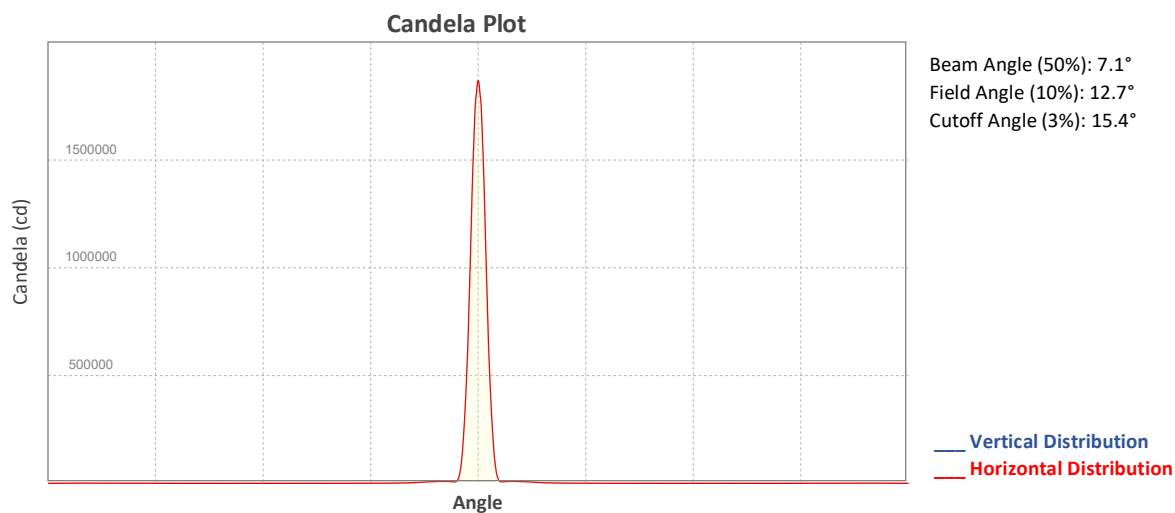


## Beam Intensities from 1-20m (3.3-65.6ft)

Distance	1m	2m	3m	4m	5m	6m	7m	8m	9m	10m
Lux	1861738	465435	206860	116359	74470	51715	37995	29090	22984	18617
Distance	11m	12m	13m	14m	15m	16m	17m	18m	19m	20m
Lux	15386	12929	11016	9499	8274	7272	6442	5746	5157	4654
Distance	3.3ft	6.6ft	9.8ft	13.1ft	16.4ft	19.7ft	23ft	26.2ft	29.5ft	32.8ft
FC	172961	43240	19218	10810	6918	4804	3530	2703	2135	1730
Distance	36.1ft	39.4ft	42.7ft	45.9ft	49.2ft	52.5ft	55.8ft	59.1ft	62.3ft	65.6ft
FC	1429	1201	1023	882	769	676	598	534	479	432

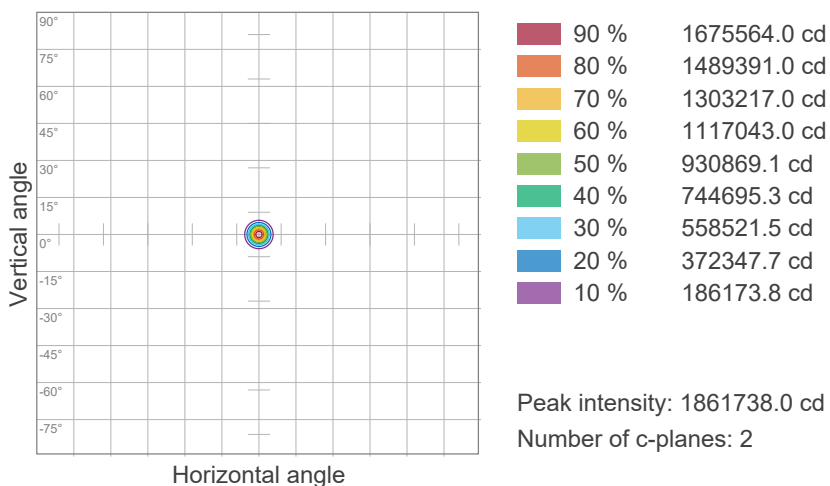
# Photometric & Chromaticity Report

Maverick Storm 4 Solo Wash: Full Spot - Full Power

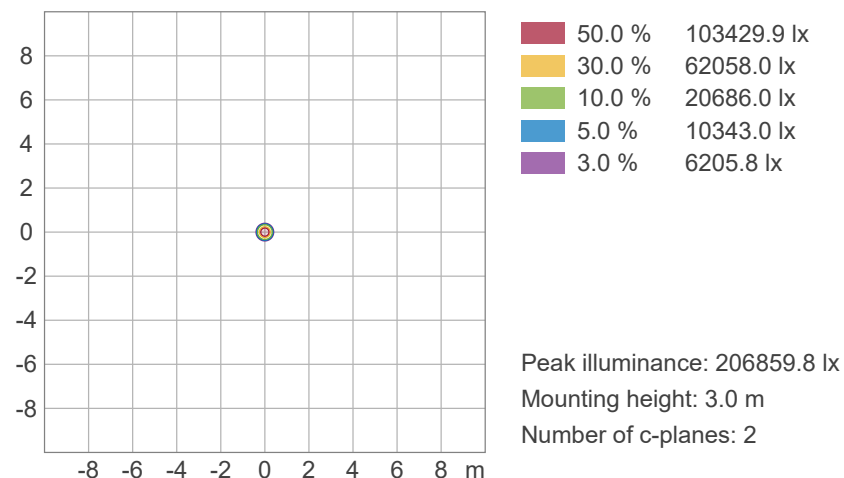


## ISO Diagrams

### ISO Candela Diagram



### ISO Lux Diagram

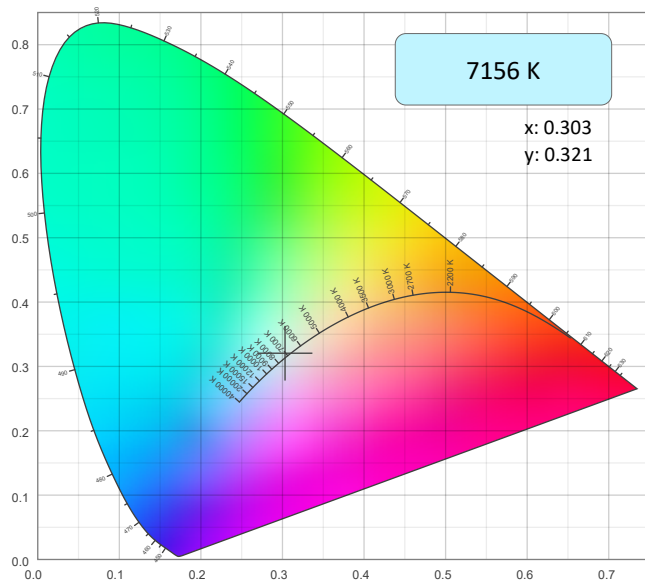


# Photometric & Chromaticity Report

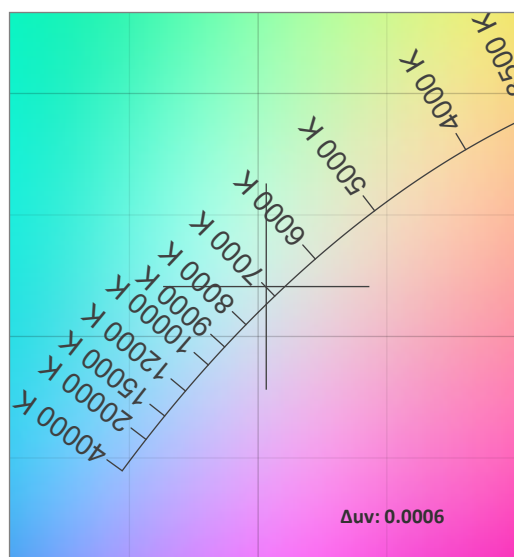
Maverick Storm 4 Solo Wash: Full Spot - Full Power

## Chromaticity

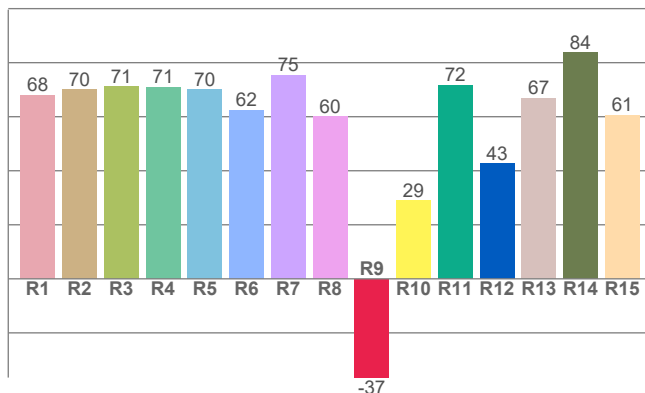
CIE 1931



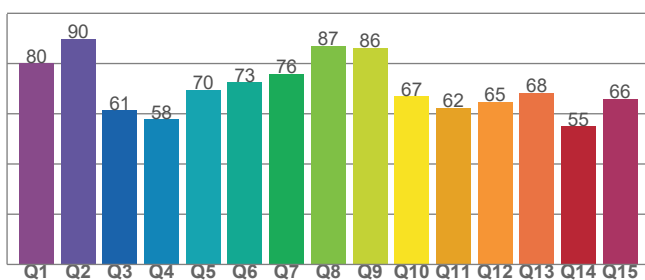
CIE 1931 - Zoom



CRI: 68.5 (R1-R8)



CQS: 69.1



## Color Parameters

Color Temperature	Color Coordinate CIE 1931	Color Coordinate CIE 1931
CCT	x	y
7156 K	0.303	0.321

Color Deviation from Black Body Curve	Color Coordinate CIE 1964	Color Coordinate CIE 1964
$\Delta uv$	y	u
0.0006	0.321	0.194

Color Rendering Index	Red Component	Color Quality Scale
CRI	CRI - R9	CQS
68.5	-36.5	69.1

Television Lighting Consistency Index	Color Fidelity	Color Gamut
TLCI	TM30 - Rf	TM30 Rg
46	69.2	94.9

# Photometric & Chromaticity Report

Maverick Storm 4 Solo Wash: Full Spot - Full Power

## TM-30 Details

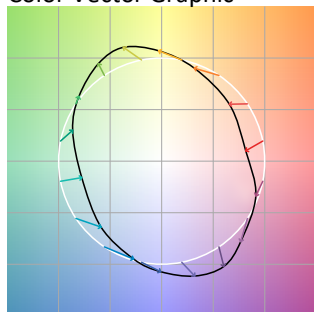
**Rf 69.2**

Fidelity Index  
(Rg)

**Rg 94.9**

Gammut Index (Rg)

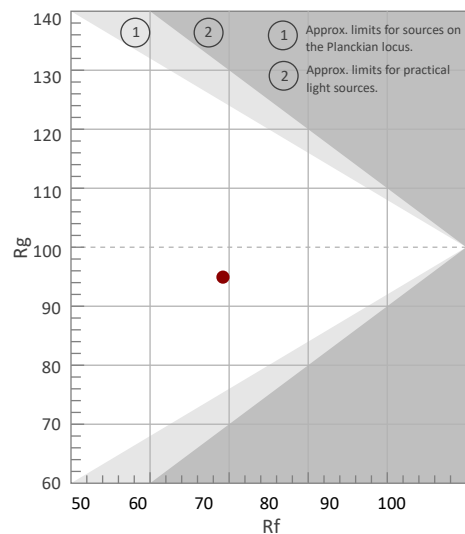
Color Vector Graphic



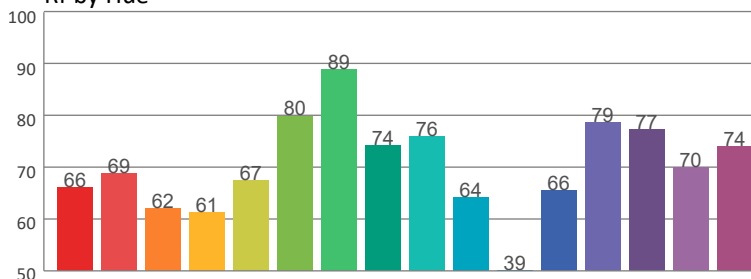
Color Distortion Graphic



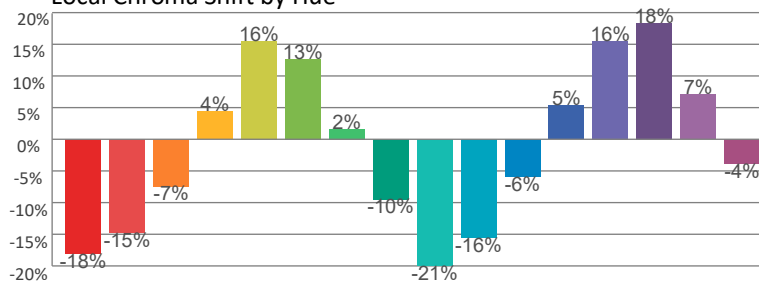
		Graphic shifts (%)	
Hue Bin	Rf	Chroma	Hue
1	66	-18%	-6%
2	69	-15%	9%
3	62	-7%	24%
4	61	4%	24%
5	67	16%	15%
6	80	13%	-1%
7	89	2%	-8%
8	74	-10%	-13%
9	76	-21%	1%
10	64	-16%	20%
11	39	-6%	30%
12	66	5%	20%
13	79	16%	10%
14	77	18%	-7%
15	70	7%	-22%
16	74	-4%	-15%



Rf by Hue



Local Chroma Shift by Hue



Color Evaluation Sample

