

MR UPLOAD

INSTRUCTIONS

The MR UPLOAD updates the firmware of Maverick and Rogue products through the DMX port. (See [Compatible Products.](#))

PART 1

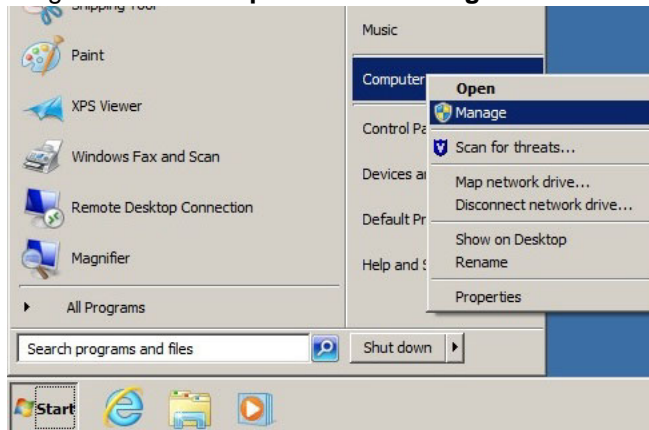
Preliminary preparations.

1. Install **MRUploaderSetup.exe** to a Windows PC (Windows XP or higher).
2. Plug the MR UPLOAD into the PC with the included USB cable.

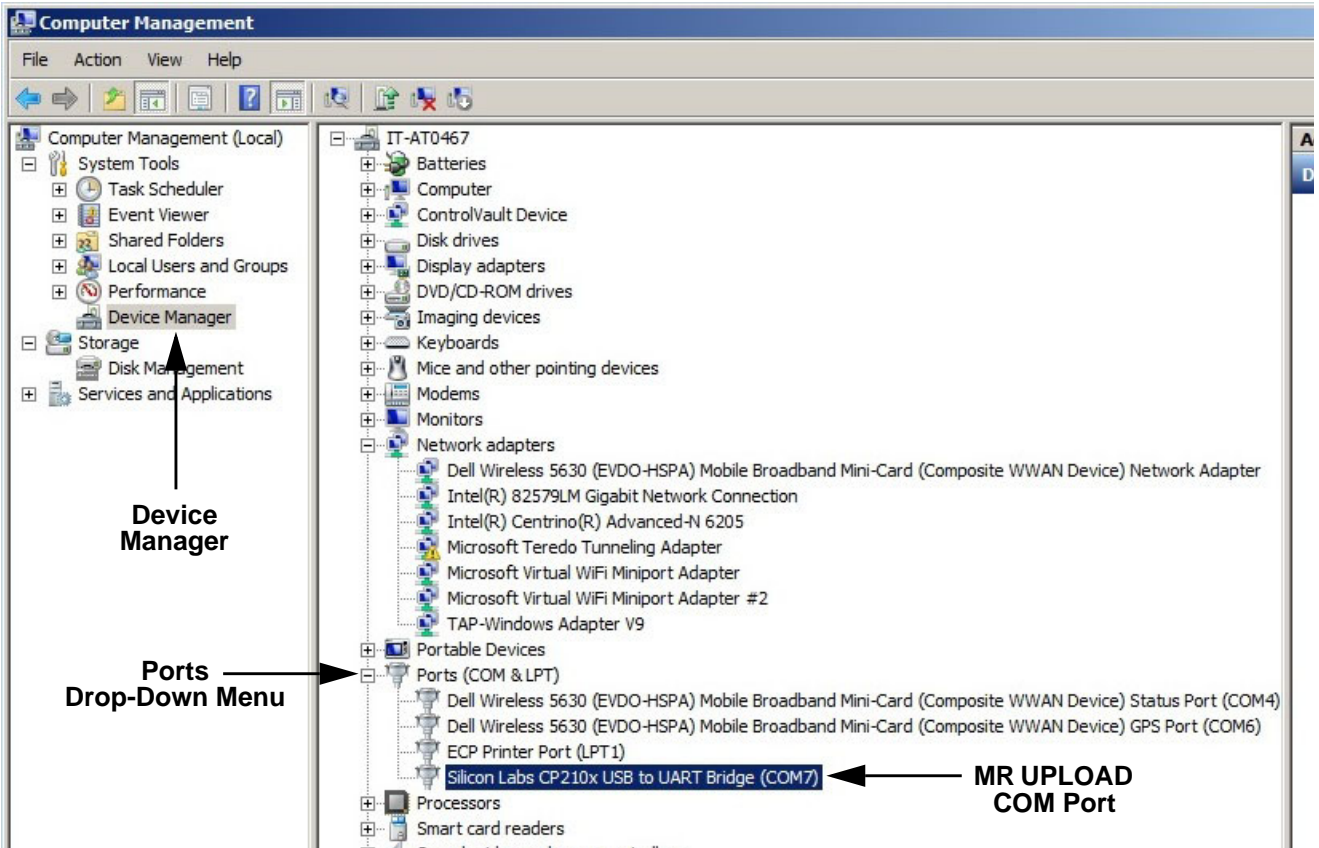
PART 2

Define the COM port of the MR UPLOAD.

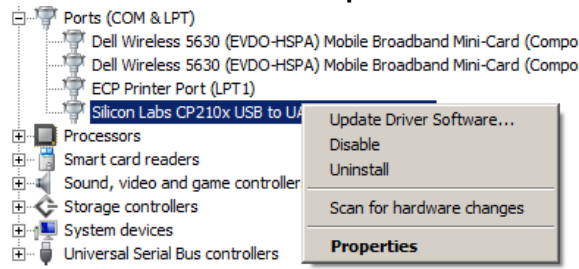
1. Open the **Start** menu and right-click on **Computer**. Click **Manage**.



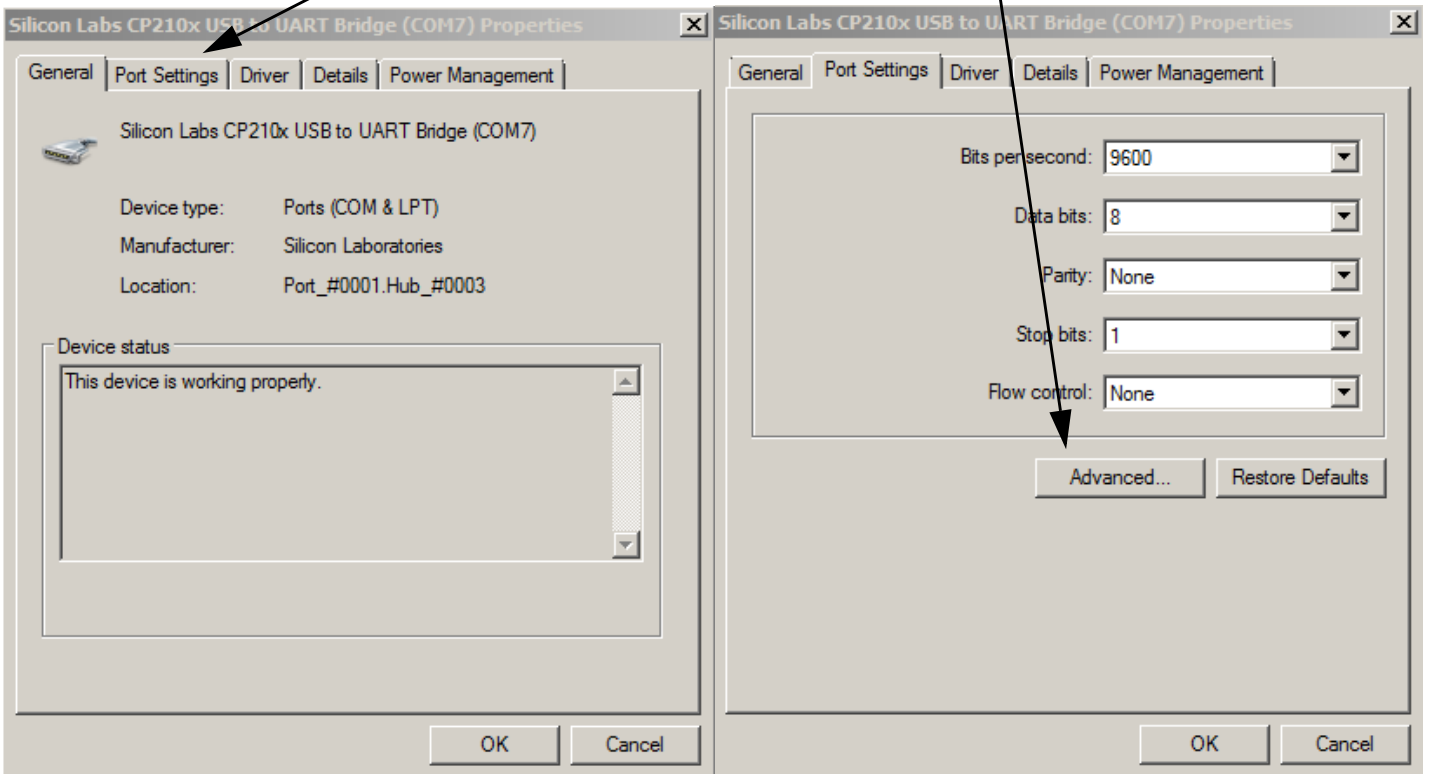
2. Click **Device Manager**, then open the **Ports (COM & LPT)** drop-down menu. The MR UPLOAD will appear as **Silicon Labs CP210x USB to UART Bridge (COM#)**. The COM port is indicated in the parentheses.



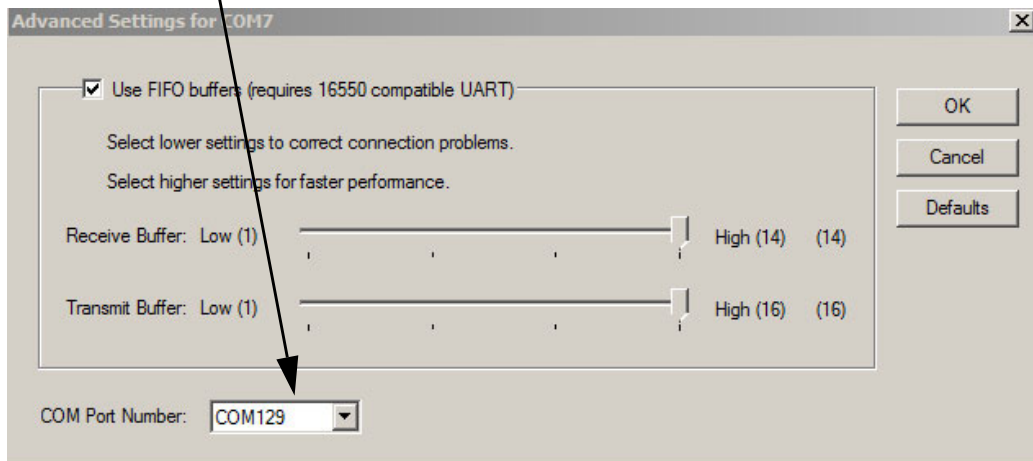
3. Right click over **Silcon Labs CP210x** and select **Properties**.



4. Once the window is open, select **Port Settings**. From port settings, select **Advanced**.



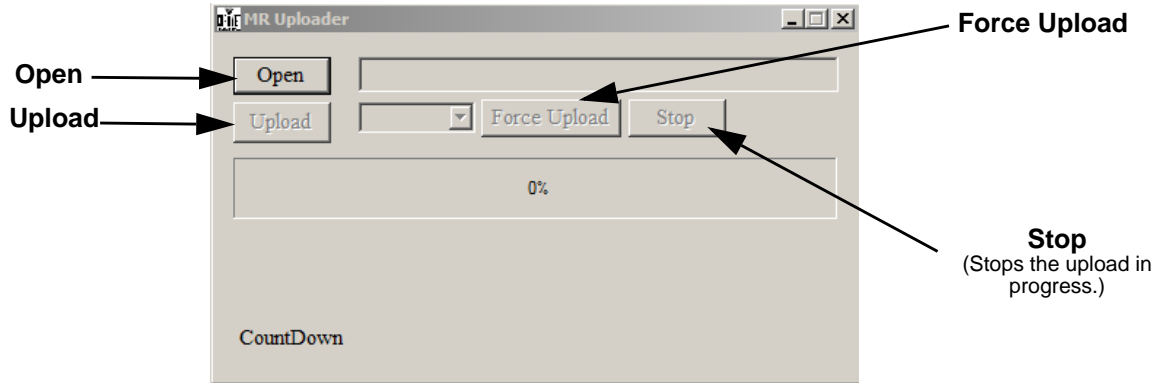
5. Change **COM** port to **COM129**.



PART 3

Set up the software.

1. Run **MRUploader.exe**.



2. Click **Open**, and select the CL File to upload.

PART 4

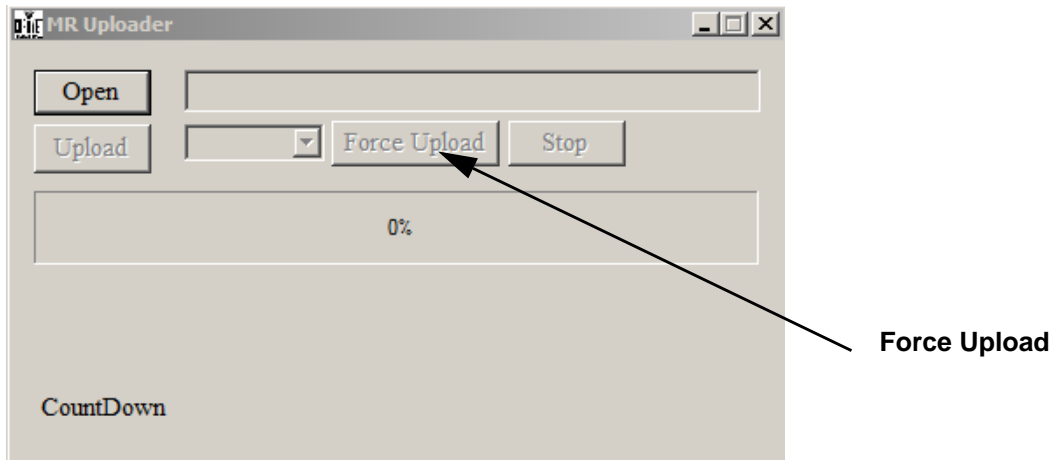
Connect and upload to the product or products.

1. Connect up to 10 of the same product to be updated together in a DMX daisy chain.
2. Power on all products.
3. Follow on-screen directions to upload products.

PART 5

If a product or products are not uploading, try **Force Upload** mode.

1. Power off the product. Do not disconnect it from the MR UPLOAD.
2. Ensure that the LED indicator on the MR UPLOAD is flashing.
3. Ensure the CL File to be uploaded to the product is selected.
4. Click the **Force Upload** button and follow on-screen directions.
5. If the problem persists, contact Chauvet Customer Service.



Compatible Products

- Rogue R1 Wash
- Rogue R2 Wash
- Rogue R3 Wash
- Rogue R1 Spot
- Rogue R2 Spot
- Rogue RH1 Hybrid
- Rogue R1 FX-B
- Maverick MK2 Spot
- Maverick MK2 Wash
- Maverick MK1 Hybrid
- Maverick MK1 Spot
- Maverick MK3 Wash