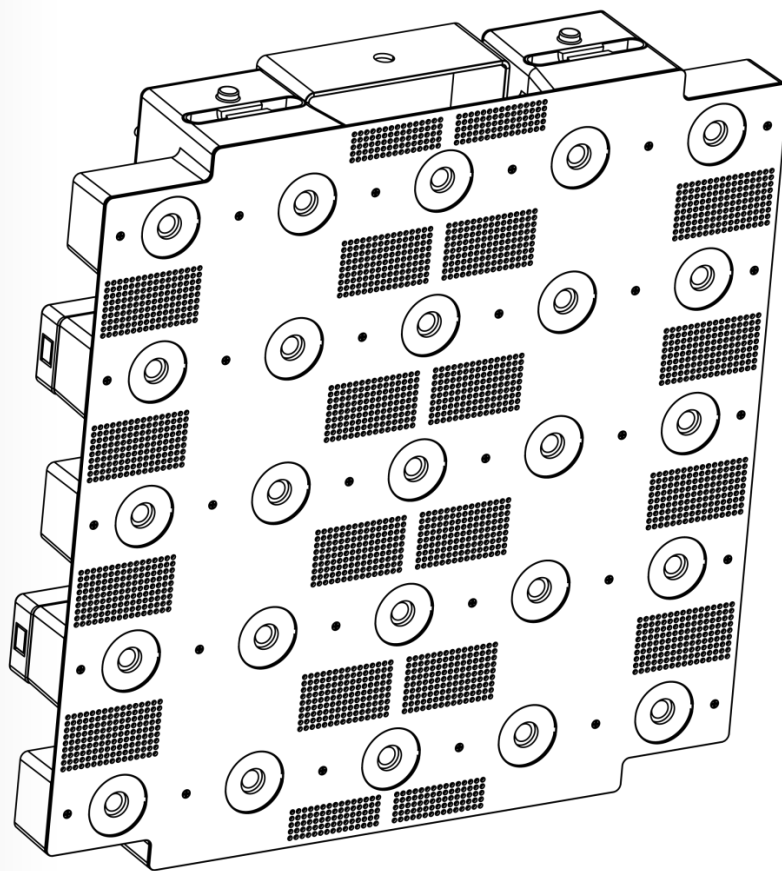


NEXUS™

Aq 5x5

User Manual



CHAUVET[®]
PROFESSIONAL

Edition Notes This User Manual covers the description, safety precautions, installation, programming, operation, and maintenance of the Nexus™ Aq 5x5.

Chauvet released this edition of the Nexus™ Aq 5x5 User Manual in November 2014.

Trademarks CHAUVET® is a registered trademark of CHAUVET & Sons, LLC. (d/b/a CHAUVET® or Chauvet). The CHAUVET® logo in its entirety including the Chauvet name and the dotted triangle, and all other trademarks in this manual pertaining to services, products, or marketing statements (for example: It's Green Thinking™) are owned or licensed by Chauvet.

Art-Net™ is designed and copyrighted by Artistic Licence Holdings Ltd.

Any other product names, logos, brands, company names, and other trademarks featured or referred to within this document are the property of their respective trademark holders.

Copyright Notice Chauvet owns the content of this User Manual in its entirety, including but not limited to pictures, logos, trademarks, and resources.

© Copyright 2015 Chauvet. All rights reserved.

Electronically published by Chauvet in the United States of America

Manual Use Chauvet authorizes its customers to download and print this manual for professional information purposes only. Chauvet expressly prohibits the usage, copy, storage, distribution, modification, or printing of this manual or its content for any other purpose without written consent from Chauvet.

Document Printing For better results, print this document in color, on letter size paper (8.5 x 11 in), double-sided. If using A4 paper (210 x 297 mm), configure your printer to scale the content accordingly.

Intended Audience Any person in charge of installing, operating, and/or maintaining this product should completely read through the guide that shipped with the product, as well as this manual, before installing, operating, or maintaining this product.

Disclaimer Chauvet believes that the information contained in this manual is accurate in all respects. However, Chauvet assumes no responsibility for any errors or omissions in this document. Chauvet reserves the right to revise and make changes to the content of this document without obligation that Chauvet notify any person or company of such revision or changes. In any way, this does not constitute a commitment by Chauvet to make such changes. Chauvet may issue a revision of this manual or a new edition to incorporate such changes.

Author	Date	Editor	Date
A. Leon	4/14/15	D. Coupe	5/19/15

Table of Contents

1. Before You Begin	3
What Is Included.....	3
Claims.....	3
Manual Conventions.....	3
Symbols.....	3
Safety Notes.....	4
Expected LED Lifespan.....	4
2. Introduction	5
Description.....	5
Features.....	5
Overview.....	6
Dimensions.....	7
Pixel Layout.....	7
3. Setup	8
AC Power.....	8
AC Plug.....	8
Fuse Replacement.....	8
Power Linking.....	9
Power Linking Diagram.....	9
DMX Linking.....	10
DMX Linking Diagram.....	10
DMX Mode.....	11
Master/Slave Mode.....	11
Ethernet Connections.....	12
Ethernet Connections Diagram.....	12
Kling-Net Mode.....	12
Art-Net™ Mode.....	12
Setting Modes And Protocols.....	13
Mounting.....	14
Orientation.....	14
Rigging.....	14
Mounting Diagram With Affinity™ Rig Kit.....	14
Mounting Diagram With Mounting Clamp.....	15
Horizontal Panel Connection.....	15
4. Operation	16
Control Panel.....	16
Menu Map.....	17
Menu Operations.....	19
Auto Show.....	19
Exiting Auto Show Mode.....	19
Static.....	19
Dimmer Mode.....	20
Back Light.....	20
Product Information.....	20
Auto Test.....	20
DMX Channel.....	21
DMX Address.....	21
Master/Slave Mode.....	21
White Balance.....	22
Temperature.....	22
Fan Setup.....	22

Reset To Factory Defaults	22
Setting Ethernet Settings	23
Kling-Net	23
Art-Net™	23
Kling-Net Mapper.....	24
Part 1: Confirm Network Connectivity	24
The Connected Devices Window	24
Part 2: Test Network Connectivity.....	25
Part 3: Map The Products For ArKaos.....	26
Nexus Software Upgrade Instructions	27
DMX Personalities	31
Virtual Gobo Wheel	32
VGW Channel Summary.....	32
Auto Color	32
DMX Channel Assignments And Values	33
111-Channel.....	33
105-Channel.....	37
100-Channel.....	40
75-Channel.....	42
15-Channel.....	45
10-Channel.....	47
6-Channel.....	48
4-Channel.....	48
3-Channel.....	48
HSV	48
HSI	48
5. Technical Information	49
Product Maintenance.....	49
Returns	49
6. Technical Specifications.....	50
Contact Us.....	51

1. Before You Begin

What Is Included

- Nexus™ Aq 5x5
- Neutrik® powerCON® power cord
- #8 Allen key with handle
- Warranty Card
- Quick Reference Guide

Claims

Carefully unpack the product immediately, and check the box to make sure all the parts are in the package and are in good condition.




If the box or the product and included accessories appear damaged from shipping or show signs of mishandling, notify the carrier immediately, not Chauvet. Failure to report damage to the carrier immediately may invalidate the claim. In addition, keep the box and contents for inspection.

For other issues, such as missing components or parts, damage not related to shipping, or concealed damage, file a claim with Chauvet within 7 days of delivery.

Manual Conventions

Convention	Meaning
1–512	A range of values in the text
50/60	A set of mutually exclusive values in the text
<SET>	A button on the product's control panel
Settings	A product function or a menu option
MENU/ESC>Settings	A sequence of menu options
1–10	A range of menu values from which to choose in a menu
Yes/No	A set of two mutually exclusive menu options in a menu
ON	A unique value to be entered or selected in a menu

Symbols

Symbols	Meaning
	Critical installation, configuration, or operation information. Failure to comply with this information may cause the product not to work, damage third-party equipment, or cause harm to the operator.
	Important installation or configuration information. Failure to comply with this information may keep the product from working.
	Useful information.

Safety Notes

Read all the following Safety Notes before working with this product. These notes include important information about the installation, usage, and maintenance of this product.



This product contains no user-serviceable parts. Any reference to servicing in this User Manual will only apply to properly trained Chauvet certified technicians. Do not open the housing or attempt any repairs.



All applicable local codes and regulations apply to proper installation of this product.

Personal Safety

- Avoid direct eye exposure to the light source while the product is on.
- Always disconnect this product from its power source before servicing.
- Always connect this product to a grounded circuit to avoid the risk of electrocution.
- Do not touch this product's housing during operation because it may be very hot.

Mounting and Rigging

- CAUTION: When transferring product from extreme temperature environments, (e.g. cold truck to warm humid ballroom) condensation may form on the internal electronics of the product. To avoid causing a failure, allow product to fully acclimate to the surrounding environment before connecting it to power. This product is for indoor use only! To prevent risk of fire or shock, do not expose this product to rain or moisture.
- Make sure there are no flammable materials close to this product while it is operating.
- When hanging this product, always secure to a fastening device using a safety cable.

Power and Wiring

- Always make sure you are connecting this product to the proper voltage in accordance with the specifications in this manual or on the product's specification label.
- Never connect this product to a dimmer pack or rheostat.
- Never disconnect this product by pulling or tugging on the power cable.
- To eliminate unnecessary wear and improve its lifespan, during periods of non-use completely disconnect the product from power via breaker or by unplugging it.

Operation

- Do not operate this product if you see damage on the housing, lenses, or cables. Have the damaged parts replaced by an authorized technician at once.
- Do not cover the ventilation slots when operating to avoid internal overheating.
- The maximum ambient temperature is 104 °F (40 °C). Do not operate this product at a higher temperature.
- In case of a serious operating problem, stop using this product immediately!



In the unlikely event that your Chauvet product requires service, contact Chauvet Technical Support.

Expected LED Lifespan

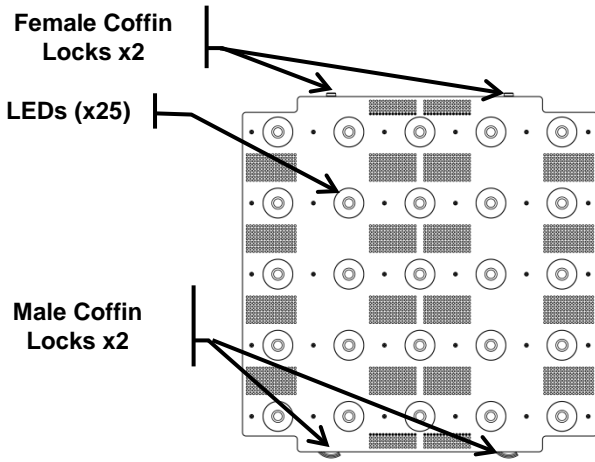
LEDs gradually decline in brightness over time, mostly because of heat, LEDs packaged in clusters exhibit higher operating temperatures than single LEDs. Using clustered LEDs at their fullest intensity significantly reduces the LEDs' lifespan, which is 40,000 to 50,000 hours under normal circumstances, If extending this lifespan is vital, lower the operating temperature by improving the ventilation around the product and reducing the ambient temperature to the optimal operating range. In addition, limiting the overall projection intensity may also help to extend the LEDs' lifespan.

2. Introduction

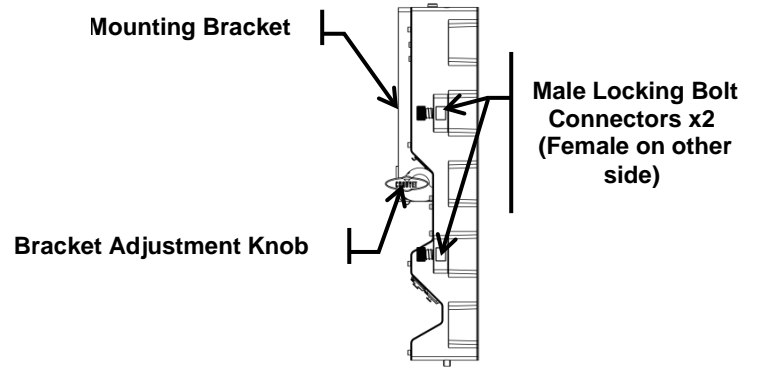
Description Nexus™ Aq 5x5 is a tour-ready RGBW blinder with a pixel mappable display of twenty-five 10 watt, quad-color LEDs. Each LED projects a narrow beam of light that creates sharp, colorful text and visual designs or bright, narrow beams of colored light. The Nexus™ Aq 5x5 operates in Standalone and Master/Slave modes and with the Art-Net™, Kling-Net, or DMX protocols. The Nexus™ Aq 5x5 panels have coffin locks so they can be hung vertically, and locking bolt connectors so they can be connected horizontally.

- Features**
- Twenty-five 10 watt RGBW LEDs
 - Pixel mapping capability
 - Operates in Standalone and Master/Slave modes
 - Operates with Art-Net™, Kling-Net, or DMX protocols using 3Ch, 4Ch, 6Ch, 10Ch, 15Ch, 75Ch, 100Ch, 105Ch, 111Ch, HSV, and HSI DMX personalities
 - Integrated locks for hanging and aligning panels in large arrays
 - Compatible with the Nexus™ Aw 7x7
 - Universal power and control cabling with Neutrik® powerCON®, Neutrik® etherCON® ports, and both 3- and 5-pin DMX ports

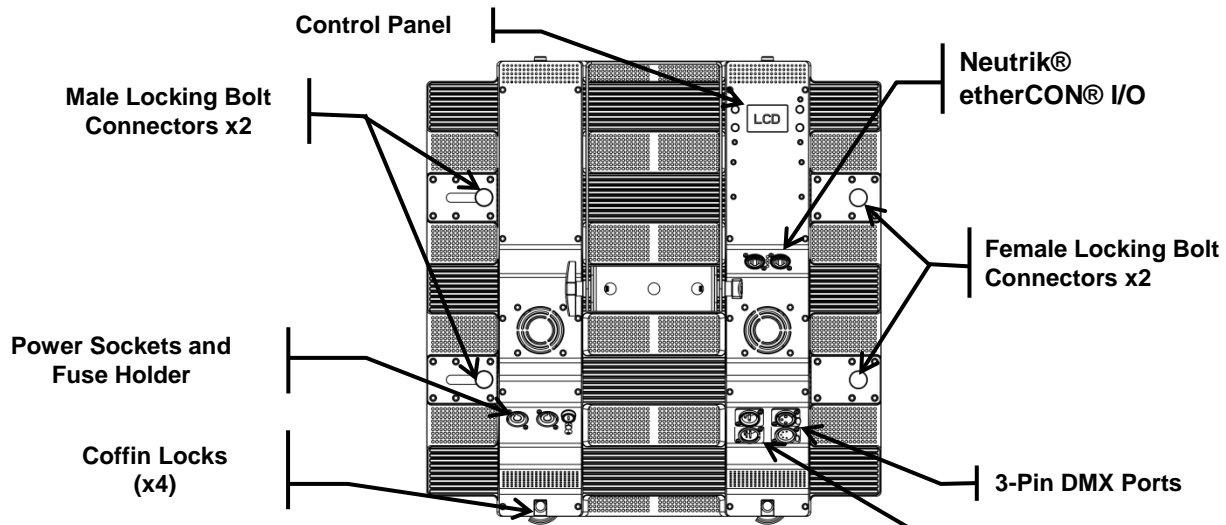
Overview



Front View

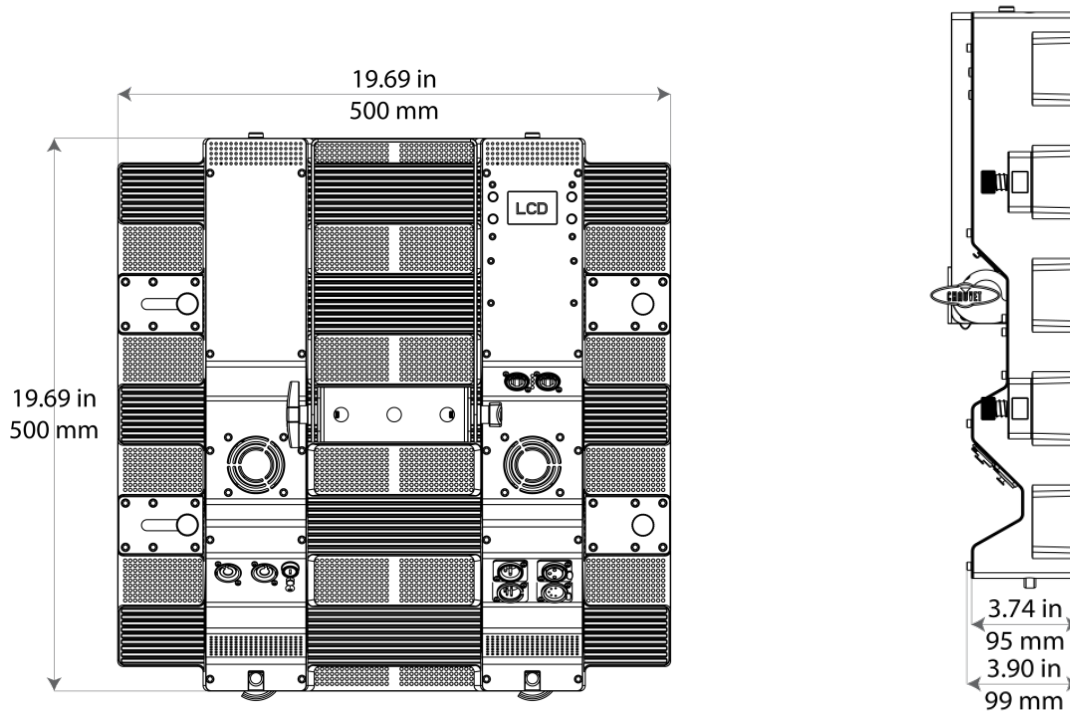


Side View

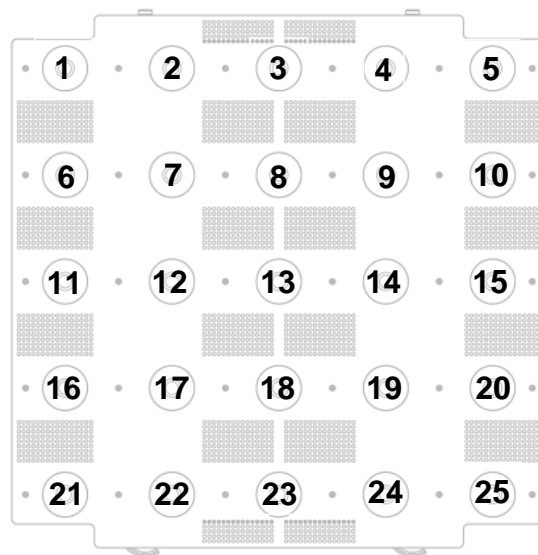


Rear View

Dimensions



Pixel Layout



3. Setup

AC Power

The Nexus™ Aq 5x5 has an auto-ranging power supply that works with an input voltage range of 100 to 240 VAC, 50/60 Hz. To determine the power requirements for the Nexus™ Aq 5x5, refer to the label on to the product or [Technical Specifications](#) in this manual.

The listed current rating indicates the maximum current draw during normal operation. For more information, download Sizing Circuit Breakers from the Chauvet website www.chauvetprofessional.com.



- **Always connect this product to a protected circuit with an appropriate electrical ground.**
- **Never connect this product to a rheostat (variable resistor) or dimmer circuit.**

AC Plug

The Nexus™ Aq 5x5 comes with a power input cord terminated with a Neutrik® powerCON® connector on one end, and an Edison plug on the other end (U.S. market). If the power input cord that came with the Nexus™ Aq 5x5 panel has no plug or there is the need to change the plug, use the table below to wire a new plug.

Connection	Wire (U.S.)	Wire (Europe)	Screw Color
AC Live	Black	Brown	Yellow or Brass
AC Neutral	White	Blue	Silver
AC Ground	Green/Yellow	Green/Yellow	Green

Fuse Replacement

The fuse is a T 3.15 A, 250 V and it is located in a fuse holder next to the etherCON® power ports. To replace the fuse, do the following:

1. Disconnect the product from power.
2. Using a flat-head screwdriver, unscrew the fuse holder cap.
3. Remove the blown fuse and replace it with a good fuse of the same type and rating
4. Screw the fuse holder cap back in place
5. Reconnect the product to power.



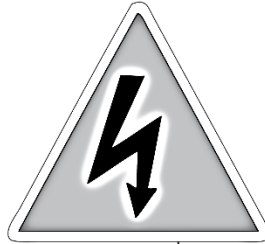
- **Make sure to disconnect the power before replacing a blown fuse.**
- **Always replace a blown fuse with a fuse of the same type and rating.**

Power Linking

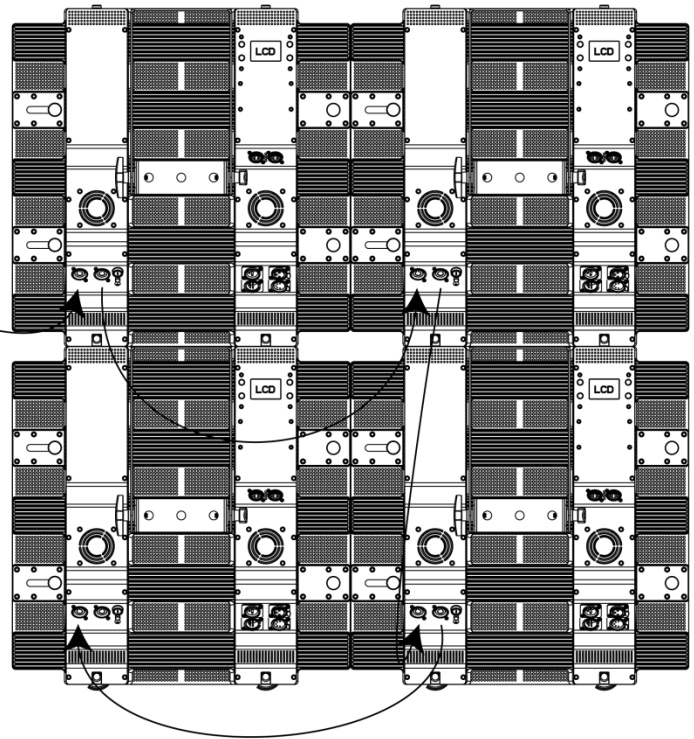
The Nexus™ Aq 5x5 supports power linking of up to:

- 5 products at 120 V,
- 8 products at 208 V, or
- 9 products at 230 V.

A power cord is included but power-linking cables are not included. For power-linking cables, see the Chauvet website at www.chauvetlighting.com.



Power Linking Diagram

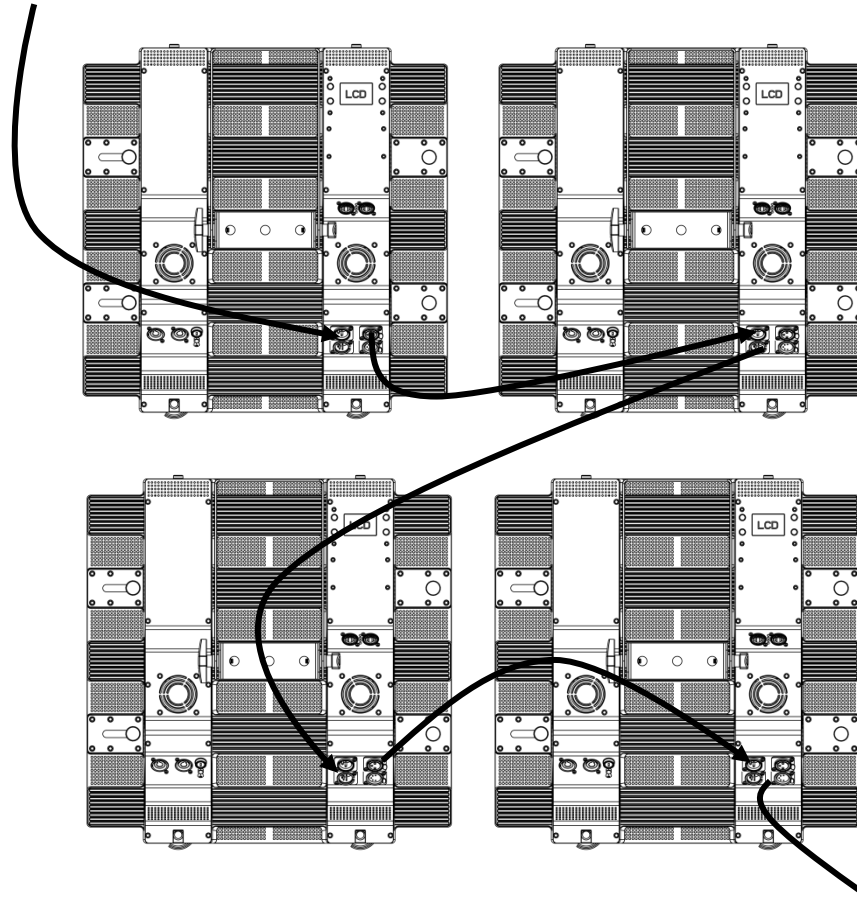


DMX Linking

DMX linking connects Nexus™ Aq 5x5 panels through their DMX In and Out ports. Nexus™ Aq 5x5 has both 3- and 5-pin DMX ports, so either 3- or 5-pin cables, or a combination of both, can be used. DMX linking is for DMX controllers and for Master/Slave control.

DMX Controller or Master

DMX Linking Diagram



Other DMX Products

DMX Mode

In DMX mode, Nexus™ Aq 5x5 panels are controlled by a DMX controller, and the DMX address and DMX personality must be set through the control panel.

The Nexus™ Aq 5x5 automatically senses its control source. When there is a DMX cable plugged in, the Nexus™ Aq 5x5 responds to a DMX controller or Master/Slave mode. When there is an etherCON® cable plug in, the Nexus™ Aq 5x5 responds to an IP protocol, such as Art-Net™ or Kling-Net.

The Nexus™ Aq 5x5 has 11 DMX personalities, each with different capabilities. The table below lists the capabilities of each personality. For more information, see [DMX Address](#) and [DMX Personality](#) in the [Menu Operations](#) section of this manual.

Personality	Capabilities
HSV	Hue, saturation, and value
HSI	Hue, saturation, and intensity
3-channel	Full panel RGB color mixing, Auto Color function
4-channel	Full panel RGBW color mixing
6-channel	Full panel RGBW color mixing, strobing, and dimming
10-channel	Full panel RGBW color mixing, auto programs, color macros, strobing, and dimming
15-channel	Full panel RGBW color mixing, strobing, color macros, and virtual gobo
75-channel	RGB color mixing with individual pixel control, Auto Color function
100-channel	RGBW color mixing with individual pixel control
105-channel	RGBW color mixing with individual pixel control, auto programs, strobing, and dimming
111-channel	RGBW color mixing with individual pixel control, color macros, virtual gobo, strobing, and dimming

Master/Slave Mode

In Master/Slave mode, one Nexus™ Aq 5x5 panel (the master) controls one or more Nexus™ Aq 5x5 panels (the slaves) without a DMX controller. The master panel is set to an auto program or static color, and sends DMX to the slaves. During Master/Slave operation, the slave products operate in unison with the master. For more information, see [Master/Slave Mode](#).



- **Do not connect a DMX controller to the DMX chain when operating Nexus™ Aq 5x5 products in Master/Slave mode, because signals from the master and the DMX controller will conflict and cause erratic behavior in all the products.**
- **Master/Slave operates via DMX ports only. The Neutrik® etherCON® ports cannot be used for Master/Slave mode.**



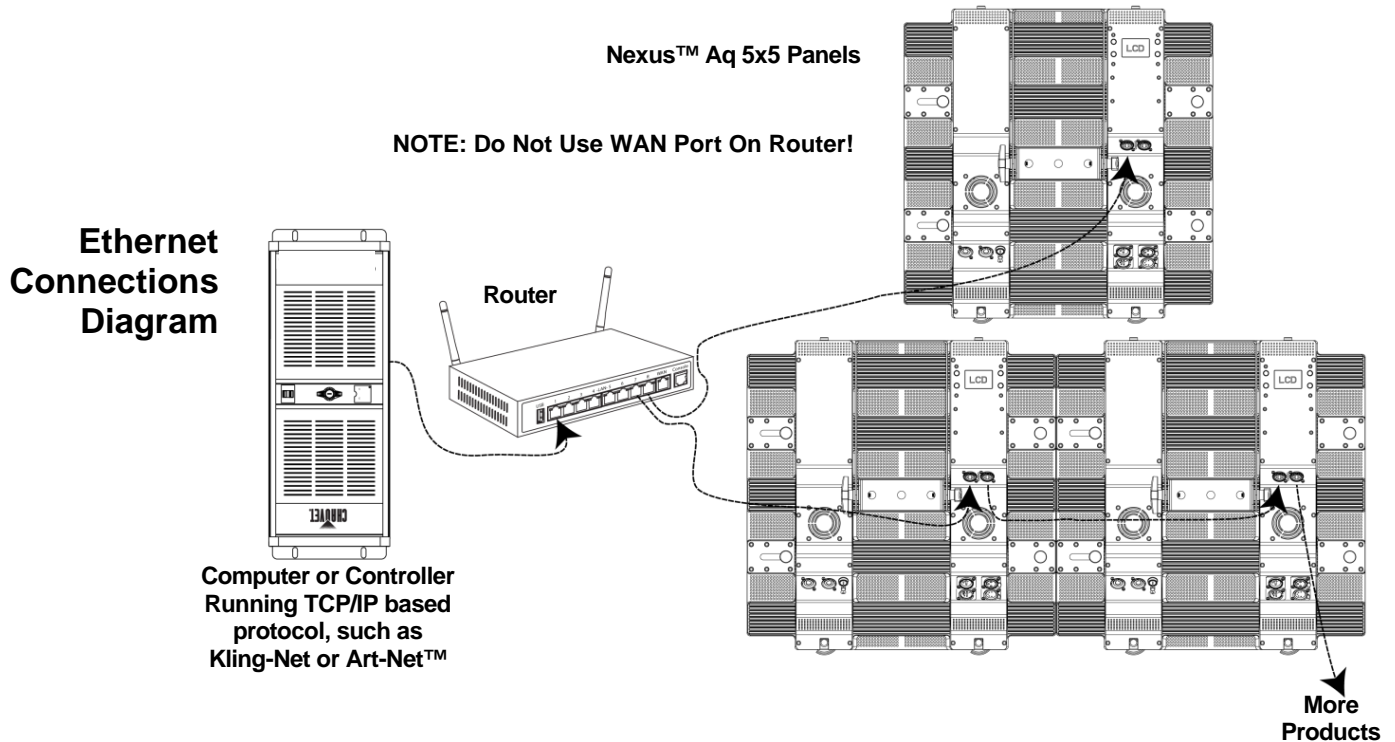
For more information about DMX, see the Chauvet DMX primer, available at www.chauvetlighting.com.

Ethernet Connections

Ethernet connections link Nexus™ Aq 5x5 to routers and each other through their Neutrik® etherCON® ports. Ethernet connections are for running TCP/IP-based control systems, such as Kling-Net and Art-Net™. All Neutrik® etherCON® ports can be either input or output ports, and panels can be linked to each other, but the start of each chain of panels must be a router port.



- Do not connect Nexus™ Aq 5x5 to the WAN port of the router.
- Each Nexus™ Aq 5x5 contains a powered switch, which amplifies the signal as it passes through.



Kling-Net Mode

Kling-Net is a network protocol that uses TCP/IP to send DMX over a network and into the Neutrik® etherCON® connection ports of the Nexus™ Aq 5x5 panels. Kling-Net works seamlessly with Kling-Net-supported ArKaos software for configuring and mapping display devices. For more information, see [Kling-Net Configuration](#).



Kling-Net requires a gigabit per second (1000 Mbps) Ethernet card and network router.

Art-Net™ Mode

Art-Net™ is an Ethernet protocol that uses TCP/IP to send DMX signals over a network and into the Neutrik® etherCON® connection ports of the Nexus™ Aq 5x5 panels. Art-Net™ requires configuration through the control panel. For more information, see [Setting Ethernet Protocols](#) and [Art-Net™](#).

For more information about Art-Net™, see the Art-Net™ protocol document available on the Chauvet website at www.chauvetprofessional.com.



Nexus™ Aq 5x5 panels do not work with Art-Net™ controllers sending in Broadcast mode. Nexus™ Aq 5x5 is designed to work with UNICAST controllers. For information about the controller's mode, see the controller's User Manual

Setting Modes And Protocols

The Nexus™ Aq 5x5 automatically senses whether control is coming from a DMX source, or a Network source. When there is a Neutrik® etherCON® cable plug into it, the Nexus™ Aq 5x5 responds to a TCP/IP protocol, such as Art-Net™ or Kling-Net, depending on the setting in the control panel. If there is a DMX cable plugged into it, the Nexus™ Aq 5x5 responds to a DMX controller or Master/Slave control, depending on the settings in the control panel.

The Nexus™ Aq 5x5 can receive control from only one set of ports, either the DMX ports or the Neutrik® etherCON® ports. The Nexus™ Aq 5x5 senses which ports are used on power-up, so the panel cannot be changed from DMX to TCP/IP, or from TCP/IP to DMX while it is turned on.

To switch from one set of ports to another (one control type to another):

1. Disconnect the Nexus™ Aq 5x5 from power.
2. Switch the control cables.
3. Reconnect the Nexus™ Aq 5x5 to power.

A DMX personality must be set for all modes – DMX, Art-Net™, or Kling-Net. For more information, see [DMX Personality](#).

Kling-Net has no settings to configure, but it must be selected through the control panel. For more information, see [Setting Ethernet Protocols](#) and [Kling-Net](#).

Art-Net™ has a number of settings that must be configured through the control panel. For more information, see [Setting Ethernet Protocols](#) and [Art-Net™](#).



- **When a DMX controller is sending signal to the DMX ports and there is nothing in the Neutrik® etherCON® ports, any Ethernet settings in the control panel will be ignored.**
- **When a TCP/IP controller is sending signal to the Neutrik® etherCON® ports and there is nothing in the DMX ports, the DMX personality will be recognized by the TCP/IP controller.**
- **Do not connect both DMX and Neutrik® etherCON® cables; use one or the other.**

Mounting

Before mounting the Nexus™ Aq 5x5, review the [Safety Notes](#) section. Read and follow the guidelines below for mounting the Nexus™ Aq 5x5.

- When selecting a desired location and before installation, consider easy access to this product for operation, programming adjustments, and routine maintenance.
- Mount in a way that allows adequate ventilation around the product.
- Do not mount near flammable materials as indicated in the [Safety Notes](#) section.
- Do not mount where there is rain, high humidity, or extreme temperature change.
- Make sure that the mounting structure can support the weight of the Nexus™ Aq 5x5. See [Technical Specifications](#) for information on weight.
- Always secure product to a fastening device using a safety cable.

Orientation

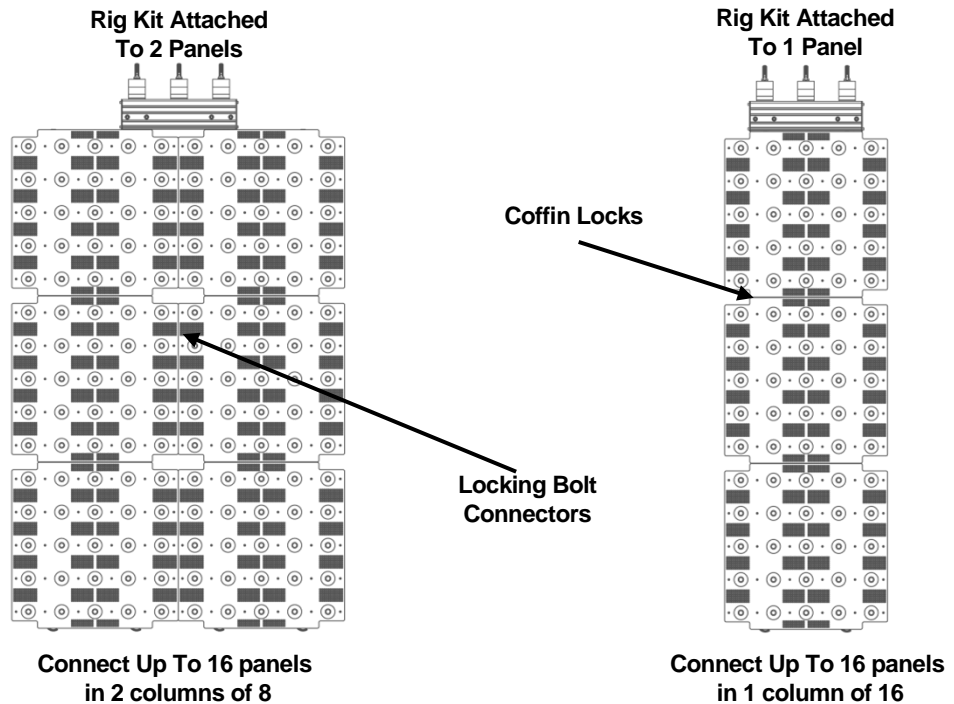
Nexus™ Aq 5x5 panels are hung in vertical rows and connected horizontally.

Rigging

Nexus™ Aq 5x5 panels are rigged using the Chauvet Affinity™ Rig Kit or a mounting clamp, both of which are sold separately. The Rig Kit can bear the weight of 16 panels, in 1 column of 16, or 2 columns of 8. The rig kit has 3 holes for M12-compatible bolts and works with most standard truss clamps. When using a mounting clamp, it can bear the weight of 4 panels hung in a single column.

The coffin locks on the top and bottom of the Nexus™ Aq 5x5 panels connect the tops and bottoms, and bear the weight, of the panels. The locking bolt connectors on the sides connect the panels and align the pixels into rows. They cannot bear the weight of the panels

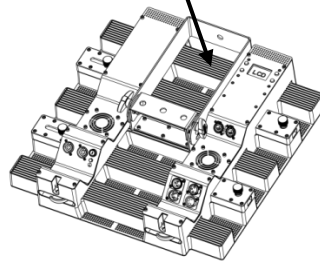
Mounting Diagram With Affinity™ Rig Kit



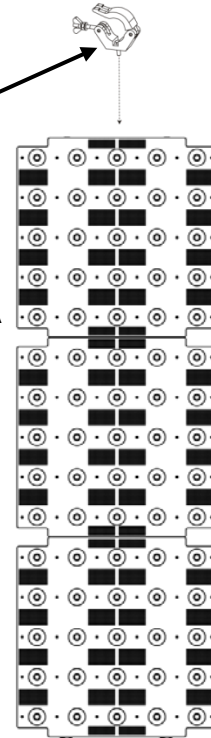
The locking bolt connectors on the sides of the Nexus™ Aq 5x5 panels are not load-bearing connectors. Do not hang Nexus™ Aq 5x5 sideways.

**Mounting Diagram
With Mounting
Clamp**

Position The Bracket
At The Top Of The
Panel

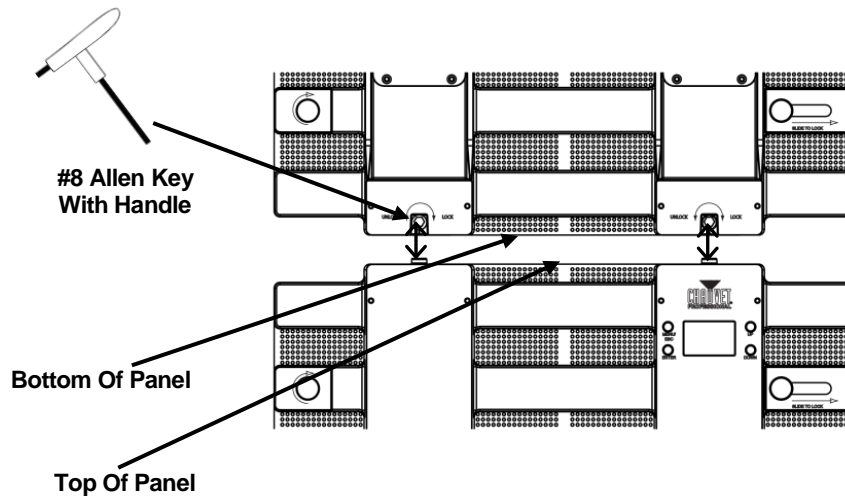


Mounting Clamp
(such as CHAUVET® CLP-15)
Into Bracket



**Up To 4 Panels In A
Single Column**

**Horizontal Panel
Connection**



4. Operation

Control Panel

Button	Function
<MENU/ESC>	Scrolls through the main menu options or exits the current menu option
<ENTER>	Enters into the highlighted menu option or sets the currently selected value
<UP>	Navigates up through a list of menu options or values
<DOWN>	Navigates down through a list of menu options or values

To select a main menu option, press <MENU/ESC> repeatedly, or press <MENU/ESC> once and then press <UP> or <DOWN>.

To enter a menu option, press <ENTER>.

To find a sub-menu or a programming value, press <UP> or <DOWN> until the menu or value is highlighted. Press <ENTER> to enter the sub-menu or select the value.

To exit back to the home screen, press and hold <MENU/ESC> until the home screen appears.

The home screen on the control panel display is what shows when the menu is left idle. The home screen includes the current operating mode, the current DMX personality (referred to as mode on the display), and the current temperature of the Nexus™ Aq 5x5.

The following [Menu Map](#) shows the main levels and the programming levels for each option.



Changes to the settings are activated when the control panel display returns to the home screen. To return the control panel display to the home screen, press and hold <MENU/ESC> until the home screen appears.

Menu Map



The Menu Map below applies only to Software Version 1.1

Main Level	Programming Levels		Description
Auto Show	Auto 0–9	Speed 000–100	Selects auto programs and its speed
	Fade		Selects color fade and its speed
Static	Fixture Color	R	Selects a preset color
		G	
		B	
		W	
		GB	
		RB	
		RG	
		RGB	
		RW	
		GW	
		BW	
		RGW	
	RBW		
	GBW		
	RGBW		
Manual Color	Red	000–255	Sets color levels for manual color mixing
	Green		
	Blue		
	White		
Dimmer Mode	Off		Sets dimming curve
	Dimmer 1–3		
Back Lite	On		Sets control panel backlight on time
	10S		
	20S		
	30S		
Information	Auto Test		Starts a self-test
	Fixture Hours		Shows total operating hours
	Version		Shows software version
	IP Address		Shows IP address
	Device ID		Shows ID number
DMX Address	001–512		Sets DMX starting address

Main Level	Programming Levels		Description		
DMX Channel	3Ch		Sets DMX personality for DMX, Art-Net™ mode, and Kling-Net mode		
	4Ch				
	6Ch				
	10Ch				
	15Ch				
	75Ch				
	100Ch				
	105Ch				
	111Ch				
	HSV				
	HSI				
Master/Slave	Master		Sets Master mode		
	Slave		Sets Slave mode		
White Balance	Red	125–255	Sets red, green, and blue maximum values for white balance		
	Green				
	Blue				
Temperature			Shows product's internal temperature		
Fan Setup	Auto		Sets fan to stop if the product is cool		
	High		Sets fan to run continuously		
Ethernet Settings	Protocol	Kling-Net		Sets Kling-Net protocol	
		Art-Net	IP Mode	Static	Sets product to use its internal IP address
				DHCP	Sets product to use dynamic IP addressing
				Manual	Sets product to use manual IP addressing
			Net	000–127	Sets the net address of the product
			Subnet	00–15	Sets the subnet of the product
			Universe		Sets the universe of the product
		Start Channel	1–512	Sets the DMX start channel of the product	

Menu Operations

Menu operations configure the Nexus™ Aq 5x5 for use, including setting the control mode, the auto programs in a standalone mode, the DMX personality, and the Art-Net™ settings. The menu operations are accessed via the control panel. See [Control Panel](#).



Changes to settings are not activated until the control panel display returns to the home screen. To return the control panel display to the home screen, press and hold <MENU/ESC> until the home screen appears.

Auto Show

Auto Show mode selects built-in programs, and sets their speed, so the Nexus™ Aq 5x5 can operate without a controller. To activate Auto Show mode do the following:

1. Go to the **Auto Show** main level.
2. Press <ENTER>.
3. Use <UP> or <DOWN> to scroll through the list of auto programs (**0–9**). The auto programs activate as they are highlighted.
4. Press <ENTER> when the desired auto program is highlighted. A speed value from **0–100** shows in a pop-up box.
5. Use <UP> or <DOWN> to select a speed. The auto program speeds up or slows down as the numbers in the box change.
6. Press <ENTER> when the program is operating at the desired speed.
7. Press <MENU/ESC> and hold it until the home screen appears.

Exiting Auto Show Mode

Auto Show mode does not stop when a different operating mode, such as DMX, Art-Net™, or Kling-Net is selected. To exit from Auto Show mode, put the Nexus™ Aq 5x5 into Slave mode. For more information, see [Master/Slave Mode](#). Slave mode does stop when a different operating mode is selected through the control panel.

Static

Static mode selects preset colors or color mixing. To set Static mode do the following:

1. Go to the **Static** main level.
2. Press <ENTER>.
3. Use <UP> or <DOWN> to select **Fixture Color** or **Manual Color**.
4. Press <ENTER>.

For **Fixture Color**:

1. Use <UP> or <DOWN> to select desired colors (**R, G, B, W, GB, RB, RG, RGB, RW, GW, BW, RGW, RBW, GBW, RGBW**). The colors activate as they are highlighted.
2. Press <ENTER> when the desired color, or Manual Color is highlighted.

For **Manual Color**, a pop-up box shows the four available colors **R, G, B, and W**.

1. Use <UP> or <DOWN> to scroll through the list of colors. The colors activate as they are highlighted.
2. Press <ENTER> when the desired color is highlighted. A color value from **0–255** shows in a pop-up box.
3. Use <UP> or <DOWN> to change the number. The color change activates as the number changes.
4. Press <ENTER> when the desired color is activated.
5. Repeat steps 1–4 until the Nexus™ Aq 5x5 emits the desired color.

After selecting a preset color or a manual color mix, press and hold <MENU/ESC> until the home screen appears.

Dimmer Mode

Dimmer mode configures the rate of change in light intensity. There are 3 different dimmer modes with **1** being the slowest and **3** being the fastest. When Dimmer Mode is set to **Off**, the panel fades in direct proportion to the DMX values. To configure Dimmer mode, do the following:

1. Go to the **Dimmer Mode** main level.
2. Press **<ENTER>**. A list of dimmer modes (**Dimmer 1–3** and **Off**) shows in a pop-up box.
3. Use **<UP>** or **<DOWN>** to scroll through through the dimmer modes.
4. Press **<ENTER>** when the desired dimmer mode is highlighted
5. Press and hold **<MENU/ESC>** until the home screen appears.

Back Light

Back Lite option determines how long the control panel display stays on during inactivity. To set the display backlight time, do the following:

1. Go to the **Back Lite** main level.
2. Press **<ENTER>**. A list of times (**On**, **10S**, **20S**, and **30S**) shows in a pop-up box.
3. Use **<UP>** or **<DOWN>** to scroll through the list.
4. Press **<ENTER>** when the desired time is highlighted
5. Press and hold **<MENU/ESC>** until the home screen appears.

Product Information

Product Information shows information about the Nexus™ Aq 5x5 panel, and it has an auto test function. To display product information, do the following:

1. Go to the **Information** main level.
2. Press **<ENTER>** and a list of information options show.
3. Use **<UP>** or **<DOWN>** to scroll through the information options.
 - **Fixture Hours** – The amount of time the product has been in use
 - **Version** – The software version installed on the product
 - **IP Address** - The product's IP address
 - **Device ID** - The product's ID number (used with Kling-Net only)
 - **Auto Test** - See [Auto Test](#).
4. Press **<ENTER>** when the desired option is highlighted.
5. The information shows on the screen.
6. Press and hold **<MENU/ESC>** until the home screen appears.

Auto Test

Auto test runs a program that checks the Nexus™ Aq 5x5 circuitry and all the LEDs. To activate the **Auto Test** function, do the following:

1. Go to the **Information** main level.
2. Press **<ENTER>**.
3. Use **<UP>** or **<DOWN>** to scroll through and highlight **Auto Test**. The words **Auto Test** show in a pop-up box and the Nexus™ Aq 5x5 begins an auto test.



To stop the Auto Test function press **<MENU/ESC>**.

DMX Channel

DMX channel sets the DMX personality for use in all modes and protocols: DMX, Art-Net™, and Kling-Net. Each DMX personality has different capabilities. For more information, see [DMX Mode](#). To select a DMX personality, do the following:

1. Go to the **DMX Channel** main level.
2. Press **<ENTER>**. A pop-up box shows with a list of personalities (**3Ch, 4Ch, 6Ch, 10Ch, 15Ch, 75Ch, 100Ch, 105Ch, 111Ch, HSV, and HSI**).
3. Use **<UP>** or **<DOWN>** to scroll through the list.
4. Press **<ENTER>** when the desired DMX personality is highlighted.
5. Press and hold **<MENU/ESC>** until the home screen appears.

DMX Address

DMX Address sets the start address for DMX mode only. To set the DMX start address, do the following:

1. Go to the **DMX Address** main level.
2. Press **<ENTER>**. A number between 1–512 shows in a pop-up box.
3. Use **<UP>** or **<DOWN>** to scroll through numbers
4. Press **<ENTER>** when the desired DMX start address shows
5. Press and hold **<MENU/ESC>** until the home screen appears.

The highest recommended DMX address for each DMX personality is listed in the table below.

DMX Personality	Highest DMX Address	DMX Personality	Highest DMX Address
3Ch	510	100Ch	413
4Ch	509	105Ch	408
6Ch	507	111Ch	402
10Ch	503	HSV	510
15Ch	498	HSI	510
75Ch	438		

Master/Slave Mode

Master/Slave mode configures the Nexus™ Aq 5x5 panels so that a group of panels (the slaves) duplicates the actions of a single panel (the master). Master/Slave mode does not need a DMX controller. To configure the Nexus™ Aq 5x5s for Master/Slave mode, do the following:

First, set each of the slave panels:

1. Go to the **Master/Slave** main level.
2. Press **<ENTER>**. The words **Master** and **Slave** show in a pop-up box.
3. Use **<UP>** or **<DOWN>** to scroll between the words.
4. Press **<ENTER>** when **Slave** is highlighted.
5. Press and hold **<MENU/ESC>** until the home screen appears.

Second, set the master panel:

1. Go to the **Master/Slave** main level
2. Press **<ENTER>**. The words **Master** and **Slave** show in a pop-up box.
3. Use **<UP>** or **<DOWN>** to scroll between the words.
4. Press **<ENTER>** when **Master** is highlighted.
5. Press and hold **<MENU/ESC>** until the home screen appears.
6. Set the master to a standalone mode (an automatic program or Static mode). For more information, see [Auto Show](#) or [Static](#).

- **Set the slaves before setting the master.**
- **Do not connect a DMX controller to Nexus™ Aq 5x5 products that are configured for Master/Slave operation. The DMX controller may interfere with signals from the master.**
- **The master must be set to a standalone mode for Master/Slave to work.**



White Balance White balance sets the color temperature of the white produced when the DMX values of red, green, and blue are at **255**. To set the color temperature for white balance, do the following:

1. Go to the **White Balance** main level.
2. Use **<UP>** or **<DOWN>** to scroll through the list of colors (**Red, Green, Blue**). The colors activate as they are highlighted.
3. Press **<ENTER>** when the Nexus™ Aq 5x5 panel emits the desired color.
4. Use **<UP>** or **<DOWN>** to select the desired maximum value, **125–255**.
5. Repeat the steps for each color.
6. Press and hold **<MENU/ESC>** until the home screen appears.

Temperature The Temperature option shows the internal temperature of the Nexus™ Aq 5x5. The temperature is shown on the display home screen, but can also be accessed through the control panel. To show the internal temperature through the control panel, do the following:

1. Go to the **Temperature** main level.
2. Press **<ENTER>**. The current temperature of the Nexus™ Aq 5x5 shows in pop-up box.
3. Press and hold **<MENU/ESC>** until the home screen appears.

Fan Setup Fan Setup configures the fan for high or automatic operation. To select the fan speed, do the following:

1. Go to the **Fan Setup** main level.
2. Press **<ENTER>**. The words **Auto** (fan stops when the panel is cool) and **High** (fan runs continuously) show in a pop-up box.
3. Use **<UP>** or **<DOWN>** to select the desired option.
4. Press **<ENTER>**.
5. Press and hold **<MENU/ESC>** until the home screen appears.

Reset To Factory Defaults This procedure resets the Nexus™ Aq 5x5 to the default factory values:

1. Disconnect the Nexus™ Aq 5x5 from power.
2. Press and hold **<MENU/ESC>** and **<ENTER>** simultaneously.
3. Reconnect the Nexus™ Aq 5x5 to power.
4. Release **<MENU/ESC>** and **<ENTER>**. The words **Factory reset? ENTER = Confirm** show on the display.
5. Press **<ENTER>**.
6. Wait for the reset process to finish.

Setting Ethernet Settings

The Nexus™ Aq 5x5 products run on Kling-Net or Art-Net.

The Kling-Net protocol requires no configuration through the Nexus™ Aq 5x5, except to set the panel to Kling-Net. All Ethernet configurations in the Kling-Net protocol are done automatically by Kling-Net-supported ArKaos software.

The Art-Net protocol requires Ethernet configuration through the Nexus™ 5x5 menu.

Kling-Net

To set the Nexus™ Aq 5x5 to Kling-Net, do the following:

1. Go to the **Ethernet Setting** main level.
2. Press **<ENTER>**. A list of setting options shows in the display.
3. Go to the **Protocol** programming level.
4. Press **<ENTER>**. A pop-up box shows with the words **Kling-Net** and **Art-Net**.
5. Use **<UP>** or **<DOWN>** to highlight **Kling-Net**.
6. Press **<ENTER>**.
7. Press and hold **<MENU/ESC>** until the home screen shows on the display.

Art-Net™

To set the Nexus™ Aq 5x5 to Art-Net™, do the following:

1. Go to the **Ethernet Setting** main level
2. Press **<ENTER>**. A list of setting options shows in the display.
3. Go to the **Protocol** programming level.
4. Press **<ENTER>**. A pop-up box shows with the words **Kling-Net** and **Art-Net**
5. Use **<UP>** or **<DOWN>** to highlight **Art-Net**.
6. Press **<ENTER>**.
7. Press **<DOWN>**. **IP Mode** is highlighted.
8. Press **<ENTER>**. A pop-up box shows with 3 IP modes (**Static**, **DHCP**, and **Manual**).
9. Use **<UP>** or **<DOWN>** to highlight the desired mode.
10. Press **<ENTER>** to select the mode.

If Manual IP mode was selected, a pop-up box shows in the display with an IP address. Use **<ENTER>** to move between octets of the IP address and **<UP>** or **<DOWN>** to change the numbers in the segments.

11. Press **<MENU/ESC>** to return to the previous programming level.
12. Press **<DOWN>** to highlight **Net**.
13. Press **<ENTER>**. A pop-up box shows with a Net number between **0–127**.
14. Press **<UP>** or **<DOWN>** until the desired Net number shows.
15. Press **<ENTER>**. The display returns to the list of setting options.
16. Press **<DOWN>** to highlight **Subnet**.
17. Press **<ENTER>**. A pop-up box shows with a Subnet number between **0–15**.
18. Press **<UP>** or **<DOWN>** until the desired Subnet number shows.
19. Press **<ENTER>**. The display returns to the list of setting options.
20. Press **<DOWN>** to highlight **Universe**.
21. Press **<ENTER>**. A pop-up box shows with a Universe number between **0–15**.
22. Press **<UP>** or **<DOWN>** until the desired Universe number shows.
23. Press **<ENTER>**. The display returns to the list of setting options.
24. Press **<DOWN>** to highlight **Start Channel**.
25. Press **<ENTER>**. A pop-up box shows a DMX starting address between **1–512**.
26. Press **<UP>** or **<DOWN>** until the desired starting number shows.
27. Press **<ENTER>**. The display returns to the list of setting options.
28. Press and hold **<MENU/ESC>** until the home screen shows on the display.

Kling-Net Mapper

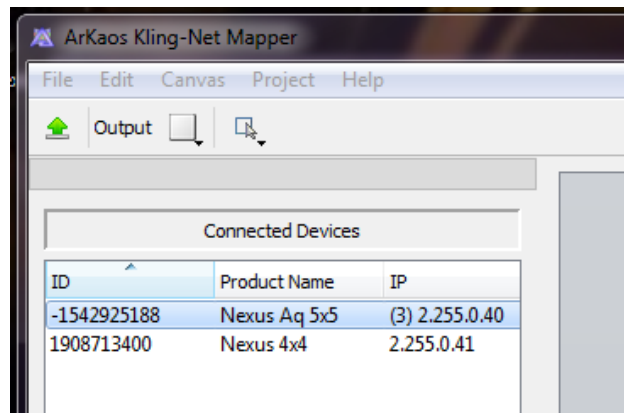
Kling-Net Mapper is part of the ArKaos software package and is used to inform the ArKaos software about the layout of the Nexus™ Aq 5x5 panels. This process is called mapping.

Kling-Net Mapper and ArKaos software can run simultaneously allowing the operator to see immediately the effects of the mapping on the live presentation. However, Kling-Net Mapper does not need to be active for ArKaos software to work. For more information, see ArKaos manuals at <http://arkaopro.com>.

Part 1: Confirm Network Connectivity

The following section provides step-by-step instructions for mapping the Nexus™ Aq 5x5 panels and informing ArKaos software of the mapping.

1. Connect the Arkaos computer and Nexus™ Aq 5x5s to the same network. For more information, see [Art-Net™/Kling-Net Connection Diagram](#).
2. Set the all the Nexus™ Aq 5x5s to Kling-Net operating mode. For more information, see [Setting Ethernet Protocols](#).
3. Open the ArKaos Kling-Net Mapper. All the Kling-Net devices populate a list on the left side of the screen in the Connected Devices window



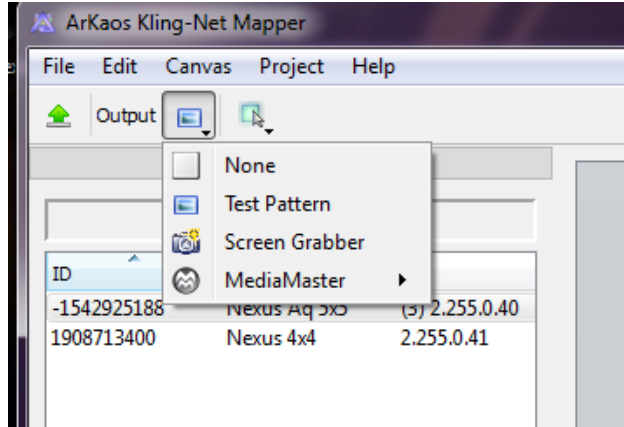
The Connected Devices Window

It can take up to 20 seconds for all the products to populate the list. The devices display in different colors for different reasons, which are as follows:

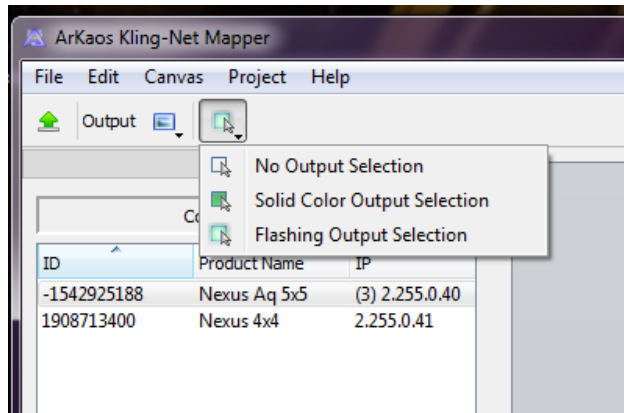
Colors and Activity	Explanation
Black with an ID number and IP address	There is connectivity and everything is working properly, but the device is not yet mapped.
Green with an ID number and IP address	There is connectivity and everything is working properly, and the device is mapped.
Black to red with no IP address during initial population	The King-Net™ Mapper could not find an IP address for the device, most likely because the system is using an Ethernet switch instead of an Ethernet hub.
Black to red after initial population	The connectivity has been lost.

Part 2: Test Network Connectivity

4. Select the Output dropdown icon from the tool bar at the top of the Kling-Net Mapper screen. One of the options will be Test Pattern.



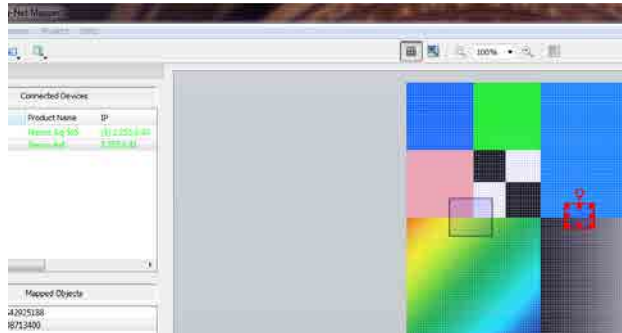
5. Select **Test Pattern**. The image to the right of the icon is a small screen, indicating that Test Pattern is the current mode.
6. Select the icon to the right of the Output dropdown icon. One of the options will be Flashing Output Selection.



7. Select **Flashing Output Selection**. The icon is a faded green square with an arrow, indicating that a flashing green light is the current test pattern.
8. Left click once on an LED display product. The product flashes green.
9. Repeat Step 8 for every product in the list.

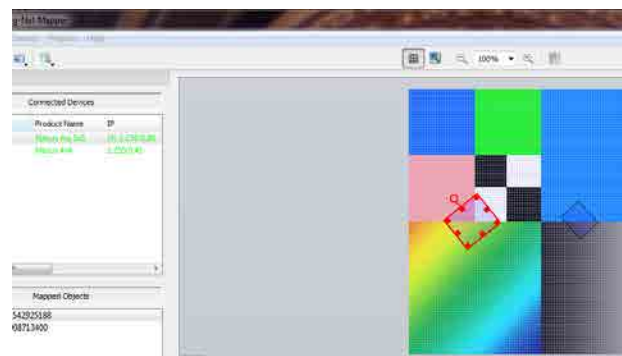
Part 3: Map The Products For ArKaos

10. Make sure the Nexus™ Aq 5x5 products are all listed in the Connected Devices window and have flashed when tested. For more information, see [Part1 Confirming Connectivity](#).
11. Click on the first product in the list and drag it onto the mapping image in the center of the screen. A shape representing the display product shows on the mapping image. The product displays the pattern on the mapping image.

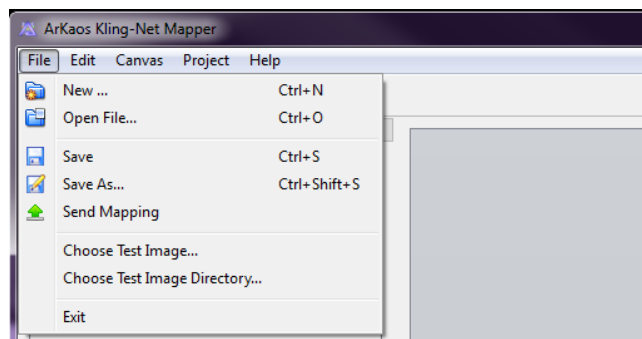


The red outline around the product on the mapping image indicates that the product is selected.

12. Drag, rotate, and resize the shape on the mapping image until it is in the position needed for the presentation layout.



13. Repeat steps 11 thru 12 for every Nexus™ Aq 5x5 product.
14. Complete Parts One and Two.
15. Click on **File** in the ArKaos Media Mapper.
16. Click on **Save As**.



17. Save the file.



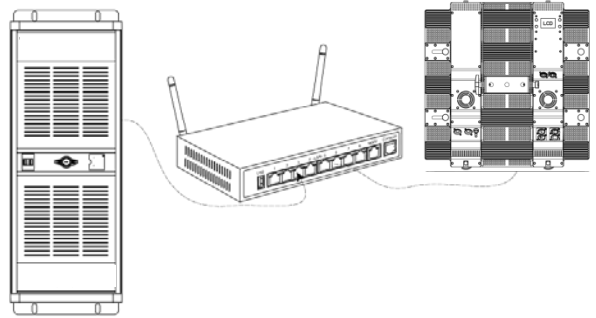
Remember the location of the file because the file must be loaded into the ArKaos software.

Nexus Software Upgrade Instructions

The following steps refer to the Windows® 7 operating system environment.

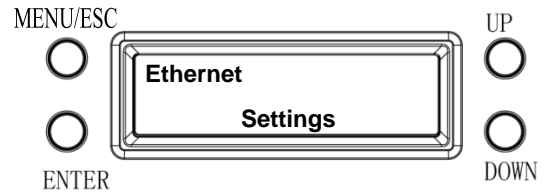
Step 1:

1. Connect the Nexus™ Aq 5x5 to the router.
2. Verify the computer is using the same network as the Nexus™ Aq 5x5 product.



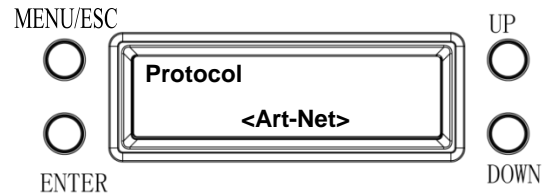
Step 2:

1. From the Nexus™ Aq 5x5 main level, navigate to **Ethernet > Settings**.



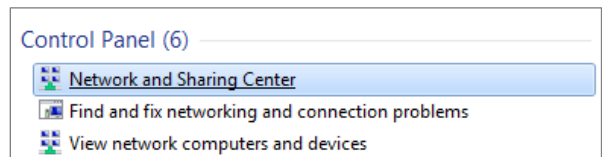
Step 3:

1. Select **Protocol**.
2. Select **<Art-Net>**.
3. Select **<Static>** IP Mode.



Step 4:

1. From the Windows® start menu, click the **<Start>** button.
2. From the Search box, type Network and Sharing Center. Windows will generate the search results in the Start window.
3. Select Network and Sharing Center and the Network and Sharing Center dialog appears.

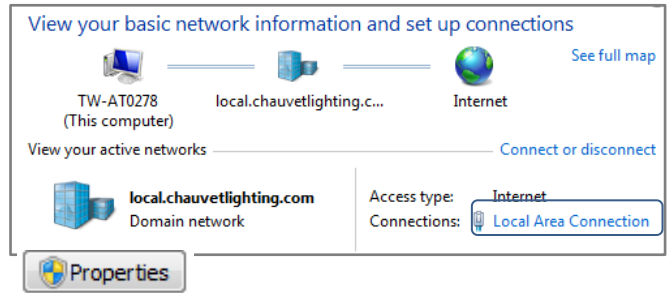


Step 5:

1. Select the desired network the product is connected to.

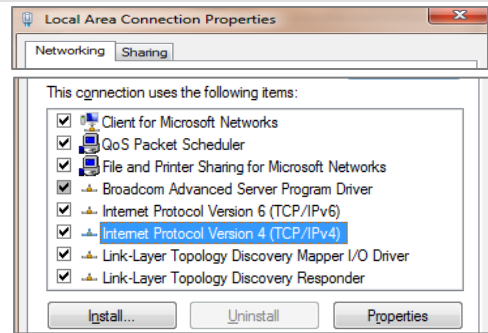
If you are running a hard-wired line from the PC to your router, then select Local Area Connection. The Local Area Connection Status dialog appears.

2. Click **Properties**. The **Local Area Connection Properties** dialog appears.



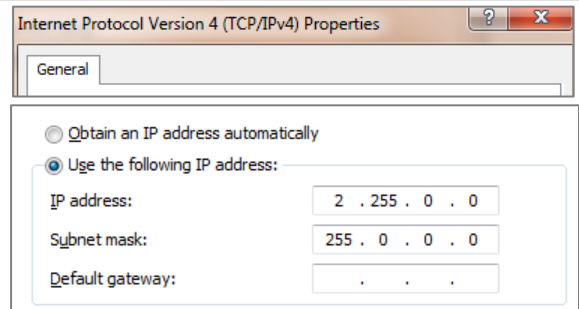
Step 6:

1. From the Networking tab, select Internet Protocol Version 4 (TCP/IPv4).
2. Click **Properties**. The Internet Protocol Version 4 (TCP/IPv4) Properties dialog appears.



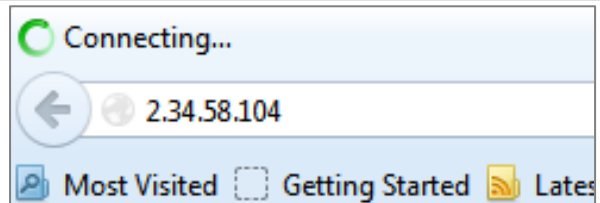
Step 7:

1. From the General tab, select **Use the following IP address:**.
2. Enter the following information:
3. Enter 2.255.0.0 in the IP address box.
4. Enter 255.0.0.0 in the Subnet mask box.
5. Click **OK**.
6. Close existing dialogs that are currently open.
7. Minimize the Control Panel, as it will be necessary to access this window after the software upgrade is uploaded to the product.



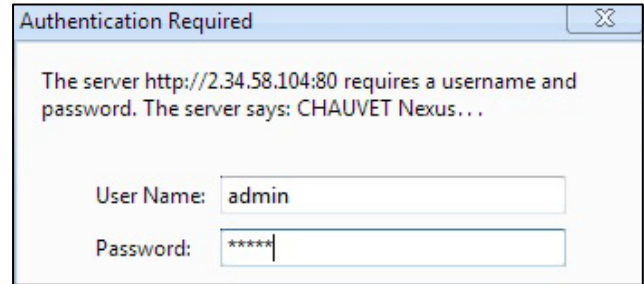
Step 8:

1. From the Nexus™ Aq 5x5 control panel, navigate to the Info main level.
2. Select **IP Address**.
3. From the PC, open the Internet browser.
4. Enter the IP address for the Nexus™ Aq 5x5 you are working with in the address bar. For example, if the IP address shown in the product's control panel is 2.34.58.104, then type that into your internet browser address bar.
5. Press **ENTER**. The Authentication Required dialog appears.



Step 9:

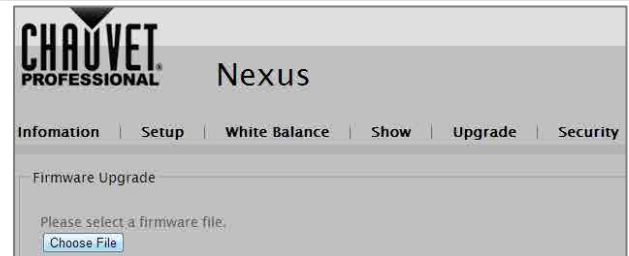
1. Enter the following information:
 - Enter **admin** in the User Name box.
 - Enter **admin** in the Password box.
2. Click **Log In**. The Nexus™ Aq 5x5 firmware window appears.



If the user name/password you entered is invalid, follow the Factory Reset procedure.

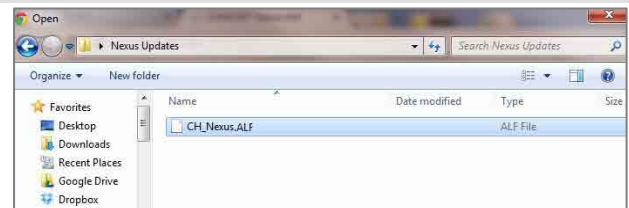
Step 10:

1. From the Navigation bar, select the Upgrade tab.
2. From the Firmware Upgrade section, click **Choose File**. The Open dialog appears.



Step 11:

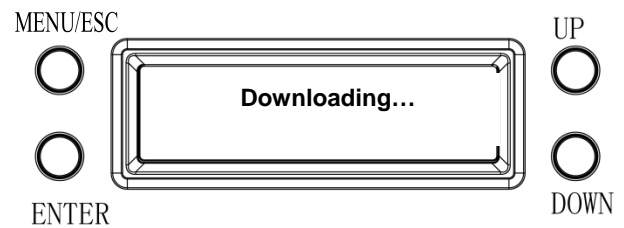
1. From the Open dialog, select the file to upload the firmware onto the Nexus™ Aq 5x5 product.
2. Click **Open**.



The “**Downloading...**” message appears in the product’s control panel.

Once the firmware finishes downloading the software, the product will automatically reset the unit and the control panel flickers.

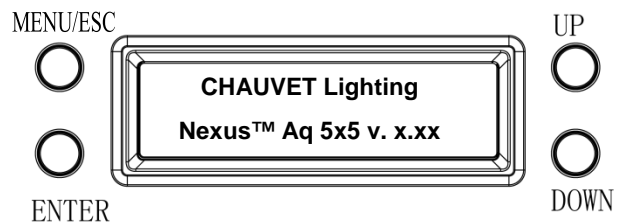
Do not turn off the product during the downloading process. It will take approximately 1 minute to reset.



Step 12:

1. Go to the Info main level.
2. Select **Version**.
3. Verify the product’s control panel displays the uploaded version.

The software upgrade portion is now complete.

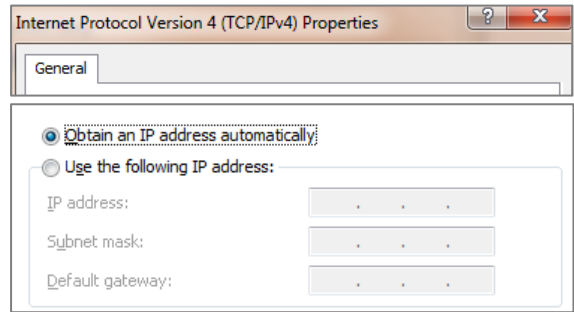


Step 13:

Once the software upgrade is complete, the IP setting on your PC needs to be changed back to the original settings.

1. Refer to Step 4 for navigation instructions on how to access the Internet Protocol Version 4 Properties (TCP/IPv4) dialog.
2. From the General tab, select **Obtain an IP address automatically**, and click OK.
3. Continue to close the dialogs displayed until you exit out of the Control Panel.

The installation process is complete.



The examples shown are for illustrative purposes, and your product's screens may appear slightly different.

DMX Personalities

The Nexus™ Aq 5x5 has 11 DMX personalities:

- 111-, 105-, 100-, and 75-channel personalities are designed for pixel mapping, either with or without all the other capabilities. These personalities use the most number of channels.
- 75- and 3-channel personalities are designed with Auto Color. Auto Color automatically mixes and blends the white emitted by the LEDs into the RGB values from the controller to expand the range of color and enhance color rendering.
- 15-channel personality is designed to take advantage of all the built-in capabilities, but does not include pixel mapping and uses far less DMX channels.

DMX Personality	Pixel Mapping	Color Macros/ White Balancing	Alpha-numeric Characters	Virtual Gobos	Strobing	Auto Color
111-Channel	X	X	X	X	X	
105-Channel	X				X	
100-Channel	X					
75-Channel	X					X
15-Channel		X	X	X	X	
10-Channel		X			X	
6-Channel					X	
4-Channel						
3-Channel						X
HSV						
HSI						

Virtual Gobo Wheel





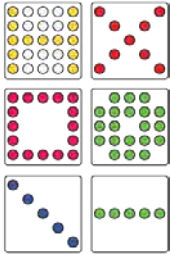

The Nexus™ Aq 5x5 has a Virtual Gobo Wheel (VGW) function in select DMX personalities. This function uses 8 different DMX channels in combination to attain a desired result. Follow the steps below to set-up VGW.

1. Set **Dimmer** (master) - Controls the overall intensity. This channel must be active in order for VGW to output light.
2. Set **Foreground** (gobo color) and **Foreground Dimmer** (gobo intensity) - These channels need to be active in order for the gobo in the next step to illuminate.
3. Set **Alphanumeric** or **Virtual Gobo**– This function sets the gobo you want to project. These functions are 2 separate channels that are designed to be used individually. The **Virtual Gobo** channel takes precedence over **Alphanumeric**.
4. Set **Alphanumeric Rotation** or **Virtual Gobo Speed** – This channel’s control is completely dependent on what gobo was selected in step 3. If an **Alphanumeric** gobo is selected, this channel controls the orientation of the gobo in 90° segments. If a **Virtual Gobo** is selected, any orientation or continuous rotation can be set.
5. Set **Background** (contrast color) and **Background Dimmer** (contrast intensity) - These channels adjust the background color and intensity.



The Virtual Gobo channel takes precedence over Alphanumeric.

VGW Channel Summary

Foreground	Foreground Dimmer	Background Color	Background Dimmer	Alphanumeric/Gobo Selection	Gobo Speed/Rotation
This channel selects your gobo color. Select from 244 color presets.	This channel adjusts the brightness of the gobo color.	This channel selects your color behind the pattern in order to create contrast. Select from 244 color presets.	This channel adjusts the brightness of the background color.	These channels select the pattern. Select from preset Alphanumeric or Virtual gobos.	This channel controls the speed/indexing of the clockwise-counterclockwise rotation of the selected gobo.
					

Auto Color

In the 3- and 75-channel DMX personalities of Nexus™ Aq 5x5, only red, green, and blue values can be changed. These DMX personalities use the unique Auto Color function. Auto Color automatically mixes and blends the white emitted by the LEDs into the RGB values from the controller to expand the range of color and enhance color rendering.

1. Choose **3Ch** or **75Ch** DMX personalities as explained in [DMX Channel](#).
2. Adjust **RGB** values as desired.

DMX Channel Assignments And Values

The channel assignment and values below are the information needed to create fixture profiles and to understand how to operate the Nexus™ Aq 5x5.

111-Channel

111Ch	Channel	Function	Value	Percent/Setting
	1	Red 1	000 ó 255	0–100%
	2	Green 1	000 ó 255	0–100%
	3	Blue 1	000 ó 255	0–100%
	4	White 1	000 ó 255	0–100%
	5	Red 2	000 ó 255	0–100%
	6	Green 2	000 ó 255	0–100%
	7	Blue 2	000 ó 255	0–100%
	8	White 2	000 ó 255	0–100%
	9	Red 3	000 ó 255	0–100%
	10	Green 3	000 ó 255	0–100%
	11	Blue 3	000 ó 255	0–100%
	12	White 3	000 ó 255	0–100%
	13	Red 4	000 ó 255	0–100%
	14	Green 4	000 ó 255	0–100%
	15	Blue 4	000 ó 255	0–100%
	16	White 4	000 ó 255	0–100%
	17	Red 5	000 ó 255	0–100%
	18	Green 5	000 ó 255	0–100%
	19	Blue 5	000 ó 255	0–100%
	20	White 5	000 ó 255	0–100%
	21	Red 6	000 ó 255	0–100%
	22	Green 6	000 ó 255	0–100%
	23	Blue 6	000 ó 255	0–100%
	24	White 6	000 ó 255	0–100%
	25	Red 7	000 ó 255	0–100%
	26	Green 7	000 ó 255	0–100%
	27	Blue 7	000 ó 255	0–100%
	28	White 7	000 ó 255	0–100%
	29	Red 8	000 ó 255	0–100%
	30	Green 8	000 ó 255	0–100%
	31	Blue 8	000 ó 255	0–100%
	32	White 8	000 ó 255	0–100%
	33	Red 9	000 ó 255	0–100%
	34	Green 9	000 ó 255	0–100%
	35	Blue 9	000 ó 255	0–100%

111Ch	Channel	Function	Value	Percent/Setting
	36	White 9	000 ó 255	0-100%
	37	Red 10	000 ó 255	0-100%
	38	Green 10	000 ó 255	0-100%
	39	Blue 10	000 ó 255	0-100%
	40	White 10	000 ó 255	0-100%
	41	Red 11	000 ó 255	0-100%
	42	Green 11	000 ó 255	0-100%
	43	Blue 11	000 ó 255	0-100%
	44	White 11	000 ó 255	0-100%
	45	Red 12	000 ó 255	0-100%
	46	Green 12	000 ó 255	0-100%
	47	Blue 12	000 ó 255	0-100%
	48	White 12	000 ó 255	0-100%
	49	Red 13	000 ó 255	0-100%
	50	Green 13	000 ó 255	0-100%
	51	Blue 13	000 ó 255	0-100%
	52	White 13	000 ó 255	0-100%
	53	Red 14	000 ó 255	0-100%
	54	Green 14	000 ó 255	0-100%
	55	Blue 14	000 ó 255	0-100%
	56	White 14	000 ó 255	0-100%
	57	Red 15	000 ó 255	0-100%
	58	Green 15	000 ó 255	0-100%
	59	Blue 15	000 ó 255	0-100%
	60	White 15	000 ó 255	0-100%
	61	Red 16	000 ó 255	0-100%
	62	Green 16	000 ó 255	0-100%
	63	Blue 16	000 ó 255	0-100%
	64	White 16	000 ó 255	0-100%
	65	Red 17	000 ó 255	0-100%
	66	Green 17	000 ó 255	0-100%
	67	Blue 17	000 ó 255	0-100%
	68	White 17	000 ó 255	0-100%
	69	Red 18	000 ó 255	0-100%
	70	Green 18	000 ó 255	0-100%
	71	Blue 18	000 ó 255	0-100%
	72	White 18	000 ó 255	0-100%
	73	Red 19	000 ó 255	0-100%
	74	Green 19	000 ó 255	0-100%
	75	Blue 19	000 ó 255	0-100%

111Ch	Channel	Function	Value	Percent/Setting
	76	White 19	000 ó 255	0–100%
	77	Red 20	000 ó 255	0–100%
	78	Green 20	000 ó 255	0–100%
	79	Blue 20	000 ó 255	0–100%
	80	White 20	000 ó 255	0–100%
	81	Red 21	000 ó 255	0–100%
	82	Green 21	000 ó 255	0–100%
	83	Blue 21	000 ó 255	0–100%
	84	White 21	000 ó 255	0–100%
	85	Red 22	000 ó 255	0–100%
	86	Green 22	000 ó 255	0–100%
	87	Blue 22	000 ó 255	0–100%
	88	White 22	000 ó 255	0–100%
	89	Red 23	000 ó 255	0–100%
	90	Green 23	000 ó 255	0–100%
	91	Blue 23	000 ó 255	0–100%
	92	White 23	000 ó 255	0–100%
	93	Red 24	000 ó 255	0–100%
	94	Green 24	000 ó 255	0–100%
	95	Blue 24	000 ó 255	0–100%
	96	White 24	000 ó 255	0–100%
	97	Red 25	000 ó 255	0–100%
	98	Green 25	000 ó 255	0–100%
	99	Blue 25	000 ó 255	0–100%
	100	White 25	000 ó 255	0–100%
	101	Color Macro + White Balance	000 ó 010 011 ó 030 031 ó 050 051 ó 070 071 ó 090 091 ó 110 111 ó 130 131 ó 150 151 ó 170 171 ó 200 201 ó 205 206 ó 210 211 ó 215 216 ó 220 221 ó 225 226 ó 230 231 ó 235 236 ó 240 241 ó 245 246 ó 250 251 ó 255	No function R: 100% G: 0–100% B: 0 R: 100%–0 G: 100% B: 0 R: 0 G: 100% B: 0–100% R: 0 G: 100%–0 B: 100% R: 0–100% G: 0 B: 100% R: 100% G: 0 B: 100%–0 R: 100%–0 G: 100%–0 B: 100% RGBW: 100% White 1 White 2 White 3 White 4 White 5 White 6 White 7 White 8 White 9 White 10 White 11

111Ch	Channel	Function	Value	Percent/Setting
	102	Foreground	000 ó 010 011 ó 255	No function Foreground color
	103	Foreground Dimmer	000 ó 255	0–100%
	104	Background	000 ó 010 011 ó 255	No function Background color
	105	Background Dimmer	000 ó 255	0–100%
	106	Alphanumeric	000 001 ó 127 028 ó 255	No function Numeric characters 1–0 Alpha characters A–Z
	107	Virtual Gobo	000 ó 010 011 ó 020 021 ó 029 030 ó 038 039 ó 047 048 ó 056 057 ó 065 066 ó 074 075 ó 083 084 ó 092 093 ó 101 102 ó 110 111 ó 119 120 ó 128 129 ó 137 138 ó 146 147 ó 155 156 ó 164 165 ó 173 174 ó 182 183 ó 191 192 ó 200 201 ó 209 210 ó 218 219 ó 227 228 ó 236 237 ó 246 247 ó 255	No function Simple cross Simple box Square imploder Square exploder Diamond imploder Diamond exploder Two-Line spinner Triangle spinner Tri-Downer Tri-Upper Bowtie spinner One-Liner Line hop up Line hop down Line hop up/down T-Spin Upside down T-Spin Diamond spoke spin Line hop left Line hop right Line hop left/right Double verticals Double horizontals Diagonal right Diagonal left Moving squares Clock
	108	Virtual Gobo Speed	000 ó 010 011 ó 100 101 ó 149 150 ó 202 203 ó 255	No function Gobo index No function Gobo speed clockwise, fast to slow Gobo speed counter-clockwise, slow to fast
		Alphanumeric Rotation	000 ó 063 064 ó 127 128 ó 191 192 ó 255	0° 90° 180° 270°
	109	Dimmer	000 ó 255	0–100%
	110	Strobe	000 ó 010 011 ó 255	No function 0–20 Hz

111Ch	Channel	Function	Value	Percent/Setting
	111	Dim Speed Mode	000 ó 051 052 ó 101 102 ó 152 153 ó 203 204 ó 255	Preset dimmer speed from display menu Linear dimmer Nonlinear dimming curve 1 (fastest) Nonlinear dimming curve 2 Nonlinear dimming curve 3 (slowest)

105-Channel

105Ch	Channel	Function	Value	Percent/Setting
	1	Red 1	000 ó 255	0-100%
	2	Green 1	000 ó 255	0-100%
	3	Blue 1	000 ó 255	0-100%
	4	White 1	000 ó 255	0-100%
	5	Red 2	000 ó 255	0-100%
	6	Green 2	000 ó 255	0-100%
	7	Blue 2	000 ó 255	0-100%
	8	White 2	000 ó 255	0-100%
	9	Red 3	000 ó 255	0-100%
	10	Green 3	000 ó 255	0-100%
	11	Blue 3	000 ó 255	0-100%
	12	White 3	000 ó 255	0-100%
	13	Red 4	000 ó 255	0-100%
	14	Green 4	000 ó 255	0-100%
	15	Blue 4	000 ó 255	0-100%
	16	White 4	000 ó 255	0-100%
	17	Red 5	000 ó 255	0-100%
	18	Green 5	000 ó 255	0-100%
	19	Blue 5	000 ó 255	0-100%
	20	White 5	000 ó 255	0-100%
	21	Red 6	000 ó 255	0-100%
	22	Green 6	000 ó 255	0-100%
	23	Blue 6	000 ó 255	0-100%
	24	White 6	000 ó 255	0-100%
	25	Red 7	000 ó 255	0-100%
	26	Green 7	000 ó 255	0-100%
	27	Blue 7	000 ó 255	0-100%
	28	White 7	000 ó 255	0-100%
	29	Red 8	000 ó 255	0-100%
	30	Green 8	000 ó 255	0-100%
	31	Blue 8	000 ó 255	0-100%
	32	White 8	000 ó 255	0-100%
	33	Red 9	000 ó 255	0-100%

105Ch	Channel	Function	Value	Percent/Setting
	34	Green 9	000 ó 255	0-100%
	35	Blue 9	000 ó 255	0-100%
	36	White 9	000 ó 255	0-100%
	37	Red 10	000 ó 255	0-100%
	38	Green 10	000 ó 255	0-100%
	39	Blue 10	000 ó 255	0-100%
	40	White 10	000 ó 255	0-100%
	41	Red 11	000 ó 255	0-100%
	42	Green 11	000 ó 255	0-100%
	43	Blue 11	000 ó 255	0-100%
	44	White 11	000 ó 255	0-100%
	45	Red 12	000 ó 255	0-100%
	46	Green 12	000 ó 255	0-100%
	47	Blue 12	000 ó 255	0-100%
	48	White 12	000 ó 255	0-100%
	49	Red 13	000 ó 255	0-100%
	50	Green 13	000 ó 255	0-100%
	51	Blue 13	000 ó 255	0-100%
	52	White 13	000 ó 255	0-100%
	53	Red 14	000 ó 255	0-100%
	54	Green 14	000 ó 255	0-100%
	55	Blue 14	000 ó 255	0-100%
	56	White 14	000 ó 255	0-100%
	57	Red 15	000 ó 255	0-100%
	58	Green 15	000 ó 255	0-100%
	59	Blue 15	000 ó 255	0-100%
	60	White 15	000 ó 255	0-100%
	61	Red 16	000 ó 255	0-100%
	62	Green 16	000 ó 255	0-100%
	63	Blue 16	000 ó 255	0-100%
	64	White 16	000 ó 255	0-100%
	65	Red 17	000 ó 255	0-100%
	66	Green 17	000 ó 255	0-100%
	67	Blue 17	000 ó 255	0-100%
	68	White 17	000 ó 255	0-100%
	69	Red 18	000 ó 255	0-100%
	70	Green 18	000 ó 255	0-100%
	71	Blue 18	000 ó 255	0-100%
	72	White 18	000 ó 255	0-100%
	73	Red 19	000 ó 255	0-100%

105Ch	Channel	Function	Value	Percent/Setting
	74	Green 19	000 ó 255	0–100%
	75	Blue 19	000 ó 255	0–100%
	76	White 19	000 ó 255	0–100%
	77	Red 20	000 ó 255	0–100%
	78	Green 20	000 ó 255	0–100%
	79	Blue 20	000 ó 255	0–100%
	80	White 20	000 ó 255	0–100%
	81	Red 21	000 ó 255	0–100%
	82	Green 21	000 ó 255	0–100%
	83	Blue 21	000 ó 255	0–100%
	84	White 21	000 ó 255	0–100%
	85	Red 22	000 ó 255	0–100%
	86	Green 22	000 ó 255	0–100%
	87	Blue 22	000 ó 255	0–100%
	88	White 22	000 ó 255	0–100%
	89	Red 23	000 ó 255	0–100%
	90	Green 23	000 ó 255	0–100%
	91	Blue 23	000 ó 255	0–100%
	92	White 23	000 ó 255	0–100%
	93	Red 24	000 ó 255	0–100%
	94	Green 24	000 ó 255	0–100%
	95	Blue 24	000 ó 255	0–100%
	96	White 24	000 ó 255	0–100%
	97	Red 25	000 ó 255	0–100%
	98	Green 25	000 ó 255	0–100%
	99	Blue 25	000 ó 255	0–100%
	100	White 25	000 ó 255	0–100%
	101	Auto Programs	000 ó 010 011 ó 031 032 ó 051 052 ó 072 073 ó 092 093 ó 112 113 ó 133 134 ó 153 154 ó 173 174 ó 194 195 ó 234 235 ó 255	No function Auto 1 Auto 2 Auto 3 Auto 4 Auto 5 Auto 6 Auto 7 Auto 8 Auto 9 Fade Auto 0 (cycles through Auto Programs 1–9)
	102	Auto Speed	000 ó 255	Slow to fast, when CH. 101 is set to Fade or has Auto 0–9 activated
	103	Dimmer	000 ó 255	0–100%
	104	Strobe	000 ó 010 011 ó 255	No function 0–20 Hz

105Ch	Channel	Function	Value	Percent/Setting
	105	Dim Mode	000 ó 051 052 ó 101 102 ó 152 153 ó 203 204 ó 255	Preset dimmer speed from display menu Linear dimmer Nonlinear dimming curve 1 (fastest) Nonlinear dimming curve 2 Nonlinear dimming curve 3 (slowest)

100-Channel

100Ch	Channel	Function	Value	Percent/Setting
	1	Red 1	000 ó 255	0–100%
	2	Green 1	000 ó 255	0–100%
	3	Blue 1	000 ó 255	0–100%
	4	White 1	000 ó 255	0–100%
	5	Red 2	000 ó 255	0–100%
	6	Green 2	000 ó 255	0–100%
	7	Blue 2	000 ó 255	0–100%
	8	White 2	000 ó 255	0–100%
	9	Red 3	000 ó 255	0–100%
	10	Green 3	000 ó 255	0–100%
	11	Blue 3	000 ó 255	0–100%
	12	White 3	000 ó 255	0–100%
	13	Red 4	000 ó 255	0–100%
	14	Green 4	000 ó 255	0–100%
	15	Blue 4	000 ó 255	0–100%
	16	White 4	000 ó 255	0–100%
	17	Red 5	000 ó 255	0–100%
	18	Green 5	000 ó 255	0–100%
	19	Blue 5	000 ó 255	0–100%
	20	White 5	000 ó 255	0–100%
	21	Red 6	000 ó 255	0–100%
	22	Green 6	000 ó 255	0–100%
	23	Blue 6	000 ó 255	0–100%
	24	White 6	000 ó 255	0–100%
	25	Red 7	000 ó 255	0–100%
	26	Green 7	000 ó 255	0–100%
	27	Blue 7	000 ó 255	0–100%
	28	White 7	000 ó 255	0–100%
	29	Red 8	000 ó 255	0–100%
	30	Green 8	000 ó 255	0–100%
	31	Blue 8	000 ó 255	0–100%
	32	White 8	000 ó 255	0–100%
	33	Red 9	000 ó 255	0–100%
	34	Green 9	000 ó 255	0–100%

100Ch	Channel	Function	Value	Percent/Setting
	35	Blue 9	000 ó 255	0-100%
	36	White 9	000 ó 255	0-100%
	37	Red 10	000 ó 255	0-100%
	38	Green 10	000 ó 255	0-100%
	39	Blue 10	000 ó 255	0-100%
	40	White 10	000 ó 255	0-100%
	41	Red 11	000 ó 255	0-100%
	42	Green 11	000 ó 255	0-100%
	43	Blue 11	000 ó 255	0-100%
	44	White 11	000 ó 255	0-100%
	45	Red 12	000 ó 255	0-100%
	46	Green 12	000 ó 255	0-100%
	47	Blue 12	000 ó 255	0-100%
	48	White 12	000 ó 255	0-100%
	49	Red 13	000 ó 255	0-100%
	50	Green 13	000 ó 255	0-100%
	51	Blue 13	000 ó 255	0-100%
	52	White 13	000 ó 255	0-100%
	53	Red 14	000 ó 255	0-100%
	54	Green 14	000 ó 255	0-100%
	55	Blue 14	000 ó 255	0-100%
	56	White 14	000 ó 255	0-100%
	57	Red 15	000 ó 255	0-100%
	58	Green 15	000 ó 255	0-100%
	59	Blue 15	000 ó 255	0-100%
	60	White 15	000 ó 255	0-100%
	61	Red 16	000 ó 255	0-100%
	62	Green 16	000 ó 255	0-100%
	63	Blue 16	000 ó 255	0-100%
	64	White 16	000 ó 255	0-100%
	65	Red 17	000 ó 255	0-100%
	66	Green 17	000 ó 255	0-100%
	67	Blue 17	000 ó 255	0-100%
	68	White 17	000 ó 255	0-100%
	69	Red 18	000 ó 255	0-100%
	70	Green 18	000 ó 255	0-100%
	71	Blue 18	000 ó 255	0-100%
	72	White 18	000 ó 255	0-100%
	73	Red 19	000 ó 255	0-100%
	74	Green 19	000 ó 255	0-100%


100Ch	Channel	Function	Value	Percent/Setting
	75	Blue 19	000 ó 255	0–100%
	76	White 19	000 ó 255	0–100%
	77	Red 20	000 ó 255	0–100%
	78	Green 20	000 ó 255	0–100%
	79	Blue 20	000 ó 255	0–100%
	80	White 20	000 ó 255	0–100%
	81	Red 21	000 ó 255	0–100%
	82	Green 21	000 ó 255	0–100%
	83	Blue 21	000 ó 255	0–100%
	84	White 21	000 ó 255	0–100%
	85	Red 22	000 ó 255	0–100%
	86	Green 22	000 ó 255	0–100%
	87	Blue 22	000 ó 255	0–100%
	88	White 22	000 ó 255	0–100%
	89	Red 23	000 ó 255	0–100%
	90	Green 23	000 ó 255	0–100%
	91	Blue 23	000 ó 255	0–100%
	92	White 23	000 ó 255	0–100%
	93	Red 24	000 ó 255	0–100%
	94	Green 24	000 ó 255	0–100%
	95	Blue 24	000 ó 255	0–100%
	96	White 24	000 ó 255	0–100%
	97	Red 25	000 ó 255	0–100%
	98	Green 25	000 ó 255	0–100%
	99	Blue 25	000 ó 255	0–100%
	100	White 25	000 ó 255	0–100%

75-Channel

75Ch	Channel	Function	Value	Percent/Setting
	1	Red 1	000 ó 255	0–100%
	2	Green 1	000 ó 255	0–100%
	3	Blue 1	000 ó 255	0–100%
	4	Red 2	000 ó 255	0–100%
	5	Green 2	000 ó 255	0–100%
	6	Blue 2	000 ó 255	0–100%
	7	Red 3	000 ó 255	0–100%
	8	Green 3	000 ó 255	0–100%
	9	Blue 3	000 ó 255	0–100%
	10	Red 4	000 ó 255	0–100%
	11	Green 4	000 ó 255	0–100%
	12	Blue 4	000 ó 255	0–100%

75Ch	Channel	Function	Value	Percent/Setting
	13	Red 5	000 ó 255	0-100%
	14	Green 5	000 ó 255	0-100%
	15	Blue 5	000 ó 255	0-100%
	16	Red 6	000 ó 255	0-100%
	17	Green 6	000 ó 255	0-100%
	18	Blue 6	000 ó 255	0-100%
	19	Red 7	000 ó 255	0-100%
	20	Green 7	000 ó 255	0-100%
	21	Blue 7	000 ó 255	0-100%
	22	Red 8	000 ó 255	0-100%
	23	Green 8	000 ó 255	0-100%
	24	Blue 8	000 ó 255	0-100%
	25	Red 9	000 ó 255	0-100%
	26	Green 9	000 ó 255	0-100%
	27	Blue 9	000 ó 255	0-100%
	28	Red 10	000 ó 255	0-100%
	29	Green 10	000 ó 255	0-100%
	30	Blue 10	000 ó 255	0-100%
	31	Red 11	000 ó 255	0-100%
	32	Green 11	000 ó 255	0-100%
	33	Blue 11	000 ó 255	0-100%
	34	Red 12	000 ó 255	0-100%
	35	Green 12	000 ó 255	0-100%
	36	Blue 12	000 ó 255	0-100%
	37	Red 13	000 ó 255	0-100%
	38	Green 13	000 ó 255	0-100%
	39	Blue 13	000 ó 255	0-100%
	40	Red 14	000 ó 255	0-100%
	41	Green 14	000 ó 255	0-100%
	42	Blue 14	000 ó 255	0-100%
	43	Red 15	000 ó 255	0-100%
	44	Green 15	000 ó 255	0-100%
	45	Blue 15	000 ó 255	0-100%
	46	Red 16	000 ó 255	0-100%
	47	Green 16	000 ó 255	0-100%
	48	Blue 16	000 ó 255	0-100%
	49	Red 17	000 ó 255	0-100%
	50	Green 17	000 ó 255	0-100%
	51	Blue 17	000 ó 255	0-100%
	52	Red 18	000 ó 255	0-100%

75Ch	Channel	Function	Value	Percent/Setting
	53	Green 18	000 ó 255	0–100%
	54	Blue 18	000 ó 255	0–100%
	55	Red 19	000 ó 255	0–100%
	56	Green 19	000 ó 255	0–100%
	57	Blue 19	000 ó 255	0–100%
	58	Red 20	000 ó 255	0–100%
	59	Green 20	000 ó 255	0–100%
	60	Blue 20	000 ó 255	0–100%
	61	Red 21	000 ó 255	0–100%
	62	Green 21	000 ó 255	0–100%
	63	Blue 21	000 ó 255	0–100%
	64	Red 22	000 ó 255	0–100%
	65	Green 22	000 ó 255	0–100%
	66	Blue 22	000 ó 255	0–100%
	67	Red 23	000 ó 255	0–100%
	68	Green 23	000 ó 255	0–100%
	69	Blue 23	000 ó 255	0–100%
	70	Red 24	000 ó 255	0–100%
	71	Green 24	000 ó 255	0–100%
	72	Blue 24	000 ó 255	0–100%
	73	Red 25	000 ó 255	0–100%
	74	Green 25	000 ó 255	0–100%
	75	Blue 25	000 ó 255	0–100%

 In the 3- and 75-channel DMX personalities of Nexus™ Aq 5x5, only red, green, and blue values can be changed. These DMX personalities use the unique Auto Color function. Auto Color automatically mixes and blends the white emitted by the LEDs into the RGB values from the controller to expand the range of color and enhance color rendering.

15-Channel

15Ch	Channel	Function	Value	Percent/Setting
	1	Dimmer	000 ó 255	0–100%
	2	Red	000 ó 255	0–100%
	3	Green	000 ó 255	0–100%
	4	Blue	000 ó 255	0–100%
	5	White	000 ó 255	0–100%
	6	Strobe	000 ó 010 011 ó 255	No function 0–20 Hz
	7	Color Macro + White Balance	000 ó 010 011 ó 030 031 ó 050 051 ó 070 071 ó 090 091 ó 110 111 ó 130 131 ó 150 151 ó 170 171 ó 200 201 ó 205 206 ó 210 211 ó 215 216 ó 220 221 ó 225 226 ó 230 231 ó 235 236 ó 240 241 ó 245 246 ó 250 251 ó 255	No function R: 100% G: 0–100% B: 0 R: 100%–0 G: 100% B: 0 R: 0 G: 100% B: 0–100% R: 0 G: 100%–0 B: 100% R: 0–100% G: 0 B: 100% R: 100% G: 0 B: 100%–0 R: 100% G: 0–100% B: 0–100% R: 100%–0 G: 100%–0 B: 100% RGBW: 100% White 1 White 2 White 3 White 4 White 5 White 6 White 7 White 8 White 9 White 10 White 11
	8	Foreground	000 ó 010 011 ó 255	No function Foreground color
	9	Foreground Dimmer	000 ó 255	0–100%
	10	Background	000 ó 010 011 ó 255	No function Background color
	11	Background Dimmer	000 ó 255	0–100%
	12	Alphanumeric	000 001 ó 127 128 ó 255	No function Numeric characters 1–0 Alpha characters A–Z

15Ch	Channel	Function	Value	Percent/Setting
13	Virtual Gobo	000 ó 010	No function	
		011 ó 020	Simple cross	
		021 ó 029	Simple box	
		030 ó 038	Square imploder	
		039 ó 047	Square exploder	
		048 ó 056	Diamond imploder	
		057 ó 065	Diamond exploder	
		066 ó 074	Two-Line spinner	
		075 ó 083	Triangle spinner	
		084 ó 092	Tri-Downer	
		093 ó 101	Tri-Upper	
		102 ó 110	Bowtie spinner	
		111 ó 119	One-Liner	
		120 ó 128	Line hop up	
		129 ó 137	Line hop down	
		138 ó 146	Line hop up/down	
		147 ó 155	T-Spin	
		156 ó 164	Upside down T-Spin	
		165 ó 173	Diamond spoke spin	
		174 ó 182	Line hop left	
		183 ó 191	Line hop right	
		192 ó 200	Line hop left/right	
		201 ó 209	Double verticals	
		210 ó 218	Double horizontals	
		219 ó 227	Diagonal right	
		228 ó 236	Diagonal left	
		237 ó 246	Moving squares	
247 ó 255	Clock			
14	Virtual Gobo Speed	000 ó 010	No function	
		011 ó 100	Gobo index	
		101 ó 149	No function	
		150 ó 202	Gobo speed clockwise, fast to slow	
		203 ó 255	Gobo speed counter-clockwise, slow to fast	
	Alphanumeric Rotation	000 ó 063	0°	
		064 ó 127	90°	
		128 ó 191	180°	
		192 ó 255	270°	
15	Dimmer Speed Mode	000 ó 051	Preset dimmer speed from display menu	
		052 ó 101	Linear dimmer	
		102 ó 152	Nonlinear dimming curve 1 (fastest)	
		153 ó 203	Nonlinear dimming curve 2	
		204 ó 255	Nonlinear dimming curve 3 (slowest)	

10-Channel

10Ch	Channel	Function	Value	Percent/Setting
	1	Dimmer	000 ó 255	0–100%
	2	Red	000 ó 255	0–100%
	3	Green	000 ó 255	0–100%
	4	Blue	000 ó 255	0–100%
	5	White	000 ó 255	0–100%
	6	Strobe	000 ó 010 011 ó 255	No function 0–20 Hz
	7	Color Macro + White Balance	000 ó 010 011 ó 030 031 ó 050 051 ó 070 071 ó 090 091 ó 110 111 ó 130 131 ó 150 151 ó 170 171 ó 200 201 ó 205 206 ó 210 211 ó 215 216 ó 220 221 ó 225 226 ó 230 231 ó 235 236 ó 240 241 ó 245 246 ó 250 251 ó 255	No function R: 100% G: 0–100% B: 0 R: 100%–0 G: 100% B: 0 R: 0 G: 100% B: 0–100% R: 0 G: 100%–0 B: 100% R: 0–100% G: 0 B: 100% R: 100% G: 0 B: 100%–0 R: 100% G: 0–100% B: 0–100% R: 100%–0 G: 100%–0 B: 100% RGBW: 100% White 1 White 2 White 3 White 4 White 5 White 6 White 7 White 8 White 9 White 10 White 11
	8	Auto Programs	000 ó 010 011 ó 031 032 ó 051 052 ó 072 073 ó 092 093 ó 112 113 ó 133 134 ó 153 154 ó 173 174 ó 194 195 ó 234 235 ó 255	No function Auto 1 Auto 2 Auto 3 Auto 4 Auto 5 Auto 6 Auto 7 Auto 8 Auto 9 Fade Auto 0 (cycles through Auto Programs 1–9)
	9	Auto Speed	000 ó 255	Slow to fast, when CH. 8 is set to fade of has Auto 0–9 activated
	10	Dimmer Speed	000 ó 051 052 ó 101 102 ó 152 153 ó 203 204 ó 255	Preset dimmer speed from display menu Linear dimmer Nonlinear dimming curve 1 (fastest) Nonlinear dimming curve 2 Nonlinear dimming curve 3 (slowest)

6-Channel


6Ch	Channel	Function	Value	Percent/Setting
	1	Dimmer	000 ó 255	0–100%
	2	Red	000 ó 255	0–100%
	3	Green	000 ó 255	0–100%
	4	Blue	000 ó 255	0–100%
	5	White	000 ó 255	0–100%
	6	Strobe	000 ó 010 011 ó 255	No function 0–20 Hz

4-Channel

4Ch	Channel	Function	Value	Percent/Setting
	1	Red	000 ó 255	0–100%
	2	Green	000 ó 255	0–100%
	3	Blue	000 ó 255	0–100%
	4	White	000 ó 255	0–100%

3-Channel

3Ch	Channel	Function	Value	Percent/Setting
	1	Red	000 ó 255	0–100%
	2	Green	000 ó 255	0–100%
	3	Blue	000 ó 255	0–100%

 In the 3- and 75-channel DMX personalities of Nexus™ Aq 5x5, only red, green, and blue values can be changed. These DMX personalities use the unique Auto Color function. Auto Color automatically mixes and blends the white emitted by the LEDs into the RGB values from the controller to expand the range of color and enhance color rendering.

HSV

HSV	Channel	Function	Value	Percent/Setting
	1	Hue	000 ó 255	0–100%
	2	Saturation	000 ó 255	0–100%
	3	Value	000 ó 255	0–100%

HSI

HSI	Channel	Function	Value	Percent/Setting
	1	Hue	000 ó 255	0–100%
	2	Saturation	000 ó 255	0–100%
	3	Intensity	000 ó 255	0–100%

 The HSV and HSI DMX personalities of Nexus™ Aq 5x5 does not use the Auto Color function. In these personalities the White portion of the LED is not used.

5. Technical Information

Product Maintenance

To maintain optimum performance and minimize wear, you should clean this product frequently. Usage and environment are contributing factors in determining the cleaning frequency.

As a rule, clean this product at least twice a month. Dust build-up reduces light output performance and can cause overheating. This can lead to reduced light source life and increased mechanical wear.

To clean the product:

1. Unplug the product from power.
2. Wait until the product has reached room temperature.
3. Use a vacuum (or dry compressed air) and a soft brush to remove dust collected on the external vents.
4. Clean all external surfaces with a mild solution of non-ammonia glass cleaner or isopropyl alcohol.
5. Apply the solution directly to a soft, lint-free cotton cloth or a lens cleaning tissue.
6. Wipe any dirt or grime to the outside edges of the lens surface.
7. Gently polish the lens surfaces until they are free of haze and lint.



Always dry the external surfaces thoroughly and carefully after cleaning them.



Do not spin the cooling fans using compressed air because you could damage them.

Returns

- The product must be sent prepaid, in the original box, and with the original packing and accessories. Chauvet will not issue call tags.
- Call Chauvet and request a Return Merchandise Authorization (RMA) number before shipping the product. Be prepared to provide the model number, serial number, and a brief description of the cause(s) for the return.
- Clearly label the package with the Chauvet provided RMA number. Chauvet will refuse any product returned without a valid RMA number.



Do not write the RMA number directly on the box. Write it on a label affixed to the box.

Once you have received the RMA number, include the following information on a piece of paper inside the box:

- Your name
- Your address
- Your phone number
- The RMA number
- A brief description of the problem(s)

Be sure to pack the product properly. Any shipping damage resulting from inadequate packaging will be the customer's responsibility. FedEx packing or double boxing is recommended.



Chauvet reserves the right to use its own discretion to repair or replace returned product(s).

6. Technical Specifications

Dimensions and Weight	Length	Width	Height	Weight
	19.7 in (500 mm)	19.7 in (500 mm)	3.8 in (95.5 mm)	22.2 lb (10 kg)
Electrical	Power Supply Type	Range		Voltage Selection
	Switching (internal)	100–240 VAC, 50/60 Hz		Auto-ranging
	Parameter	120 V 60 Hz	208 V 60 Hz	230 V 50 Hz
	Consumption	320 W	318 W	318W
	Operating current	2.66 A	1.52 A	1.38 A
Light Source	Power linking (products)	5	8	9
	Fuse	T 3.15 A, 250 V	T 3.15 A, 250 V	T 3.15 A, 250 V
	Power I/O	U.S./Worldwide		Europe
	Power input connector	Neutrik® powerCON® A		Neutrik® powerCON® A
	Power output connector	Neutrik® powerCON® B		Neutrik® powerCON® B
Photo Optic	Power cord plug	Edison (U.S.)		Local plug
	Type	Power		Lifespan
	LED	10 W		50,000 hours
DMX	Color	Quantity		Current
	RGBW	25		2.6 A
	Parameter	Standard Optics		
	Illuminance @ 5 m	11,350 lux		
	Beam angle	8°		
	Field angle	13°		
	Pixels	5 x 5		
	Pixel Pitch	100 mm		
Pixel Density	100/m ²			
Art-Net™ And Kling-Net	Color Temperature (range)	2800 to 10000 K		
	Color Temperature (full)	10650 K		
Ordering	I/O Connectors	Connector Type	Channel Range	
	3- and 5-pin XLR	Sockets	3, 4, 6, 10, 15, 75, 100, 105 or 111	
Ordering	I/O Connectors	Connector Type	Channel Range	
	Neutrik® etherCON®	Sockets	3, 4, 6, 10, 15, 75, 100, 105 or 111	
Ordering	Product Name	Item Code	UPC Number	
	Nexus™ Aq 5X5 (1-pack)	03090774	781462211226	
	Nexus™ Aq 5X5 (4-pack)	03090773	781462211219	



UL 1573
CSA C22.2 No. 166
E113093



Contact Us

WORLD HEADQUARTERS - Chauvet

General Information

Address: 5200 NW 108th Avenue
Sunrise, FL 33351
Voice: (954) 577-4455
Fax: (954) 929-5560
Toll free: (800) 762-1084

Technical Support

Voice: (954) 577-4455 (Press 4)
Fax: (954) 756-8015
Email: tech@chauvetlighting.com

World Wide Web

www.chauvetlighting.com

UNITED KINGDOM AND IRELAND - Chauvet Europe Ltd.

General Information

Address: Unit 1C
Brookhill Road Industrial Estate
Pinxton, Nottingham, UK
NG16 6NT
Voice: +44 (0)1773 511115
Fax: +44 (0)1773 511110

Technical Support

Email: uktech@chauvetlighting.com

World Wide Web

www.chauvetlighting.co.uk

MEXICO - Chauvet Mexico

General Information

Address: Av. Santa Ana 30
Parque Industrial Lerma
Lerma, Mexico C.P. 52000
Voice: +52 (728) 285-5000

Technical Support

Email: servicio@chauvet.com.mx

World Wide Web

www.chauvet.com.mx

CHAUVET EUROPE - Chauvet Europe BVBA

General Information

Address: Stokstraat 18
9770 Kruishoutem
Belgium
Voice: +32 9 388 93 97

General Information

Address: Stokstraat 18
9770 Kruishoutem
Belgium
Voice: +32 9 388 93 97

Outside the U.S., United Kingdom, Ireland, or Mexico, contact your dealer. Follow their instructions to request support or to return a product. Visit our website for contact details.