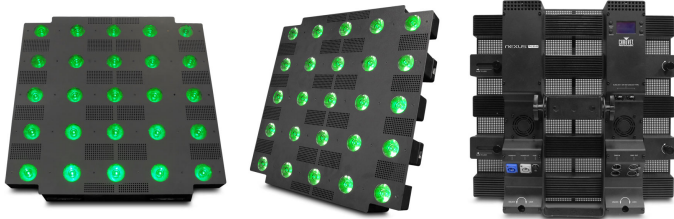


Nexus Aq 5x5

Nexus Aq 5x5 is a pixel mapping panel with 25 RGBW quad-LEDs producing tight beams of beautifully colored light. Versatile, it works wonders as a color wash, audience blinder or stunning pixel mapped display. Kling-Net, Art-Net and DMX controllable, it features a Virtual Gobo Wheel to create unique scenes by modifying channels and an Auto Color function that blends white and RGB LED values for unrivaled color mixing (in channels 3, 15, 75, 111). Designed for easy rigging with interlocking hardware, the panels lend themselves to building large arrays that stand out in any application. Rigging is fast and easy with integrated alignment and load-rated interlocking hardware. Use of the optional Affinity Rig Kit further facilitates large displays.



At a Glance

- Stage blinder delivering great output due to 25 RGBW LEDs
- Project narrow beams of light
- Create impactful text and vivid animated graphics
- Smooth dimming curve
- Built-in power supply for easy use
- Design with intuitive individual pixel-mapping options: Kling-Net, Art-Net, DMX
- Flexible panel system with integrated locks and 0.5 x 0.5 m footprint optimal for larger arrays
- Use universal power connectors: Neutrik powerCON, Neutrik etherCON, 3- and 5-pin XLR DMX connections
- Built-in effects triggered by DMX

- HSV, HSI, DMX control options

Specifications

Optical

- Light Source: 25 LEDs (quad-color RGBW) 10 W, (2.6 A), 50,000 hours life expectancy
- Color Temperature (range): 2800 to 10000 K
- Beam Angle: 8°
- Field Angle: 13°
- Illuminance (total): 11,350 lux @ 5 m
- Pixels: 5 x 5
- Pixel Pitch: 100 mm
- Pixel Density: 100/m²

Construction / Physical

- Dimensions (single unit): 3.8 x 19.7 x 19.7 in (95.5 x 500 x 500 mm)
- Dimensions (roadcase): 34 x 24 x 27 in (855 x 600 x 690 mm)
- Weight (single unit): 22.2 lb (10 kg)
- Weight (roadcase): 184 lb (83.5 kg)
- Exterior Color: Black
- Housing Material: Aluminum alloy

Control

- Control Protocol: Art-Net, Kling-Net, DMX
- DMX Channels: 4, 6, 10, 100 or 105
- Art-Net Channels: 100

Certifications / Qualifications

- CE, MET
- IP Rating: IP20, dry location

What's Included

- Nexus Aq 5x5
- Neutrik powerCON power cord
- #8 Allen wrench
- Road case (4 Pack)

Dynamic Effects

- Dimmer: Electronic
- Strobe Rate: 0 to 20 Hz
- Standalone Color Mixing: Yes
- Built-in Automated Programs: Yes

Connections

- Power Connection: Edison (Local) plug to Neutrik powerCON
- Power Input: Neutrik powerCON
- Power Output: Neutrik powerCON
- Data Connectors: 3- and 5-pin XLR, Neutrik etherCON
- Cable Length (power): 5 ft (1.5 m)

Electrical

- Input Voltage: 100 to 240 VAC, 50/60 Hz (auto-ranging)
- Power Linking: 5 units @ 120 V; 8 units @ 208 V; 9 units @ 230 V
- Power and Current: 320 W, 2.66 A @ 120 V, 60 Hz
- Power and Current: 318 W, 1.52 A @ 208 V, 60 Hz
- Power and Current: 318 W, 1.38 A @ 230 V, 50 Hz

Optional Accessories

- ArKaos Media Master Express + KN software
- Clamps
- Neutrik powerCON cables
- Neutrik etherCON cables
- DMX Cables

- Nexus Affinity Rig Kit